

TPH1 (phospho-S260) polyclonal antibody

Catalog: BS4614

Host: Rabbit

Reactivity: Human, Mouse, Rat

BackGround:

Phenylalanine hydroxylase (PAH), tyrosine hydroxylase (TH) and tryptophan hydroxylase (TPH) comprise a small family of monooxygenases that use tetrahydropterine as a cofactor during the catabolism of aromatic L-amino acids. PAH, TH and TPH all contain catalytic domains with an amino-terminal regulatory domain and a short carboxy-terminal tetramerization domain. Each of these enzymes also contains a single ferrous iron atom, which is bound to two histidines and a glutamate and is likely to be involved in the formation of the hydroxylating intermediate. TPH is the first and rate-limiting step in the biosynthesis of serotonin in the central nervous system and melatonin in the pineal gland.

Product:

Rabbit IgG, 1mg/ml in PBS with 0.02% sodium azide, 50% glycerol, pH7.2

Molecular Weight:

~ 51 kDa

Swiss-Prot:

P17752

Purification&Purity:

The antibody was affinity-purified from rabbit antiserum by affinity-chromatography using epitope-specific immunogen and the purity is > 95% (by SDS-PAGE).

Applications:

WB: 1:500~1:1000

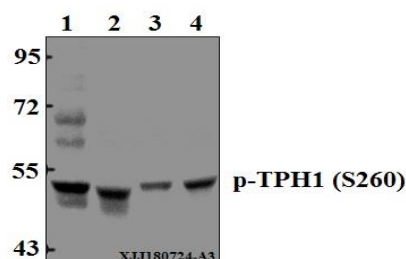
Storage&Stability:

Store at 4 °C short term. Aliquot and store at -20 °C long term. Avoid freeze-thaw cycles.

Specificity:

TPH1 (phospho-S260) polyclonal antibody detects endogenous levels of TPH1 protein when phosphorylated at Ser260.

DATA:



Western blot (WB) analysis of p-TPH1 (S260) pAb at 1:500 dilution

Lane1: HEK293T whole cell lysate (40 µg)

Lane2: The Lung tissue lysate of Mouse (40 µg)

Lane3: LO2 whole cell lysate (40 µg)

Lane4: C6 whole cell lysate (40 µg)

Note:

For research use only, not for use in diagnostic procedure.

Bioworld Technology, Inc.

Add: 1660 South Highway 100, Suite 500 St. Louis Park, MN 55416, USA.

Email: info@bioworld.com

Tel: 6123263284

Fax: 6122933841

Bioworld technology, co. Ltd.

Add: No 9, weidi road Qixia District Nanjing, 210046, P. R. China.

Email: info@biogot.com

Tel: 0086-025-68037686

Fax: 0086-025-68035151