

**APG5L/ATG5 Recombinant Rabbit mAb**

Catalog: BS45832

Host: Rabbit

Reactivity: Human, Mouse, Rat

BackGround:

The protein encoded by this gene, in combination with autophagy protein 12, functions as an E1-like activating enzyme in a ubiquitin-like conjugating system. The encoded protein is involved in several cellular processes, including autophagic vesicle formation, mitochondrial quality control after oxidative damage, negative regulation of the innate antiviral immune response, lymphocyte development and proliferation, MHC II antigen presentation, adipocyte differentiation, and apoptosis. Several transcript variants encoding different protein isoforms have been found for this gene. [provided by RefSeq, Sep 2015]

Product:

Store at -20 °C. Supplied in 50mM Tris-Glycine(pH 7.4), 0.15M NaCl, 40%Glycerol, 0.01% sodium azide and 0.05% BSA. Stable for 12 months from date of receipt.

Molecular Weight:

55 kDa

Swiss-Prot:

Q9H1Y0

Purification&Purity:

Affinity Purification

Applications:

WB: 1:1000-1:5000 IHC: 1:100-1:200 FC:

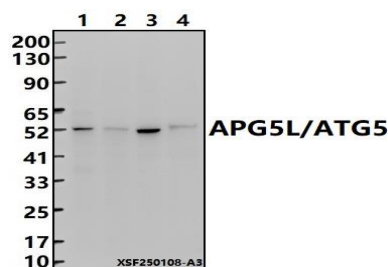
1:200

Storage&Stability:

Store at 4 °C short term. Aliquot and store at -20 °C long term. Avoid freeze-thaw cycles.

Specificity:

IgG

DATA:

Western blot (WB) analysis of APG5L/ATG5 Recombinant Rabbit mAb at 1:500 dilution

Lane1:U-87MG whole cell lysate(30ug)

Lane2:U251 whole cell lysate(30ug)

Lane3:THP-1 whole cell lysate(30ug)

Lane4:The Stomach tissue lysate of Mouse(30ug)

Note:

For research use only, not for use in diagnostic procedure.

Bioworld Technology, Inc.

Add: 1660 South Highway 100, Suite 500 St. Louis Park, MN 55416, USA.

Email: info@bioworld.com

Tel: 6123263284

Fax: 6122933841

Bioworld technology, co. Ltd.

Add: No 9, weidi road Qixia District Nanjing, 210046, P. R. China.

Email: info@biogot.com

Tel: 0086-025-68037686

Fax: 0086-025-68035151