

## IGFBP3 Recombinant Rabbit mAb

Catalog: BS45635

Host: Rabbit

Reactivity: Human

### BackGround:

This gene is a member of the insulin-like growth factor binding protein (IGFBP) family and encodes a protein with an IGFBP domain and a thyroglobulin type-I domain. The protein forms a ternary complex with insulin-like growth factor acid-labile subunit (IGFALS) and either insulin-like growth factor (IGF) I or II. In this form, it circulates in the plasma, prolonging the half-life of IGFs and altering their interaction with cell surface receptors. Alternate transcriptional splice variants, encoding different isoforms, have been characterized. [provided by RefSeq, Jul 2008]

### Product:

Store at -20 °C. Supplied in 50mM Tris-Glycine(pH 7.4), 0.15M NaCl, 40%Glycerol, 0.01% sodium azide and 0.05% BSA. Stable for 12 months from date of receipt.

### Molecular Weight:

32 kDa

### Swiss-Prot:

P17936

### Purification&Purity:

Affinity Purification

### Applications:

WB: 1:1000&lt;br /&gt;IP: 1:50

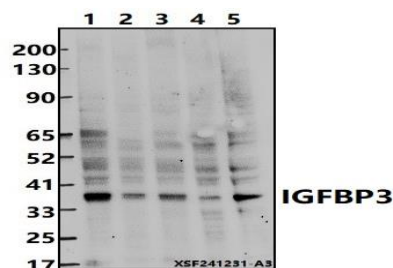
### Storage&Stability:

Store at 4 °C short term. Aliquot and store at -20 °C long term. Avoid freeze-thaw cycles.

### Specificity:

IgG

### DATA:



Western blot (WB) analysis of IGFBP3 Recombinant Rabbit mAb at 1:500 dilution

Lane1:U-87MG whole cell lysate(30ug)

Lane2:A431 whole cell lysate(30ug)

Lane3:A549 whole cell lysate(30ug)

Lane4:BV2 whole cell lysate(30ug)

Lane5:PMVEC whole cell lysate(30ug)

### Note:

For research use only, not for use in diagnostic procedure.

### Bioworld Technology, Inc.

Add: 1660 South Highway 100, Suite 500 St. Louis Park, MN 55416, USA.

Email: [info@bioworld.com](mailto:info@bioworld.com)

Tel: 6123263284

Fax: 6122933841

### Bioworld technology, co. Ltd.

Add: No 9, weidi road Qixia District Nanjing, 210046, P. R. China.

Email: [info@biogot.com](mailto:info@biogot.com)

Tel: 0086-025-68037686

Fax: 0086-025-68035151