



EGF Recombinant Rabbit mAb

Catalog: BS45625

Host: Rabbit

Reactivity: Mouse, Rat

BackGround:

This gene encodes epidermal growth factor (EGF), the founding member of the EGF family of growth factors that are implicated in cell proliferation and differentiation. The encoded protein can localize to the membrane and function in juxtacrine signaling or undergo proteolytic processing to generate a soluble form of the hormone. Mice lacking the encoded protein do not exhibit an abnormal phenotype but transgenic mice overexpressing the encoded protein exhibit hypospermatogenesis. [provided by RefSeq, Jul 2016]

Product:

Store at -20 °C. Supplied in 50mM Tris-Glycine(pH 7.4), 0.15M NaCl, 40%Glycerol, 0.01% sodium azide and 0.05% BSA. Stable for 12 months from date of receipt.

Molecular Weight:

160 kDa

Swiss-Prot:

P01132

Purification&Purity:

Affinity Purification

Applications:

WB: 1:1000
IHC: 1:200-1:1000

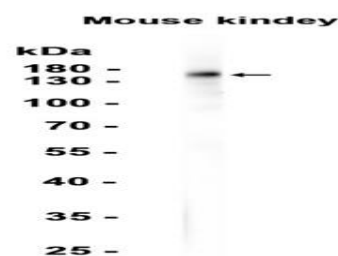
Storage&Stability:

Store at 4 °C short term. Aliquot and store at -20 °C long term. Avoid freeze-thaw cycles.

Isotype:

IgG

DATA:



Western blot analysis of extracts from Mouse kidney tissue at 1:1000.

Note:

For research use only, not for use in diagnostic procedure.

Bioworld Technology, Inc.

Add: 1660 South Highway 100, Suite 500 St. Louis Park,
MN 55416, USA.

Email: info@bioworld.com

Tel: 6123263284

Fax: 6122933841

Bioworld technology, co. Ltd.

Add: No 9, weidi road Qixia District Nanjing, 210046,
P. R. China.

Email: info@biogot.com

Tel: 0086-025-68037686

Fax: 0086-025-68035151