

## Adducin $\alpha$ (phospho-T445) polyclonal antibody

Catalog: BS4258

Host: Rabbit

Reactivity: Human, Mouse, Rat

### BackGround:

Adducins are a family of cytoskeleton proteins encoded by three genes ( $\alpha$ ,  $\beta$ ,  $\gamma$ ). Adducin is a protein associated with the inner leaflet of the plasma membrane and is one of the proteins localized at the spectrin-actin junction of the membrane skeleton. The cortical actin cytoskeletal network is lost during apoptosis and Adducins are central in the cortical actin network organization. Adducin  $\alpha$  is a cytoskeletal protein involved with sodium-pump activity in the renal tubule and is associated with hypertension. The expression of Adducin  $\alpha$  and Adducin  $\gamma$  is ubiquitous in contrast to the restricted expression of Adducin  $\beta$ . Adducin  $\beta$  is expressed at high levels in brain and hematopoietic tissues, such as bone marrow, in humans, and in spleen in mice.

### Product:

Rabbit IgG, 1mg/ml in PBS with 0.02% sodium azide, 50% glycerol, pH7.2

### Molecular Weight:

~ 81 kDa

### Swiss-Prot:

P35611

### Purification&Purity:

The antibody was affinity-purified from rabbit antiserum by affinity-chromatography using epitope-specific immunogen and the purity is > 95% (by SDS-PAGE).

### Applications:

IHC: 1:50~1:200

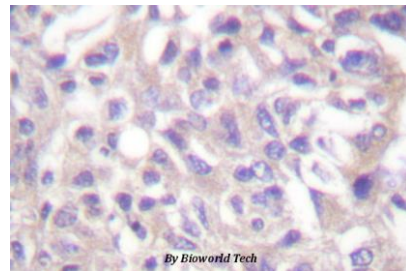
### Storage&Stability:

Store at 4 °C short term. Aliquot and store at -20 °C long term. Avoid freeze-thaw cycles.

### Specificity:

p-Adducin  $\alpha$  (T445) polyclonal antibody detects endogenous levels of Adducin  $\alpha$  protein only when phosphorylated at Thr445.

### DATA:



Immunohistochemistry (IHC) analysis of p-Adducin  $\alpha$  (T445) pAb in paraffin-embedded human breast carcinoma tissue.

### Note:

For research use only, not for use in diagnostic procedure.

### Bioworld Technology, Inc.

Add: 1660 South Highway 100, Suite 500 St. Louis Park, MN 55416, USA.

Email: [info@bioworld.com](mailto:info@bioworld.com)

Tel: 6123263284

Fax: 6122933841

### Bioworld technology, co. Ltd.

Add: No 9, weidi road Qixia District Nanjing, 210046, P. R. China.

Email: [info@biogot.com](mailto:info@biogot.com)

Tel: 0086-025-68037686

Fax: 0086-025-68035151