

## Phospho-JAK2-Y1007/1008 polyclonal antibody

Catalog: BS4109

Host: Rabbit

Reactivity: Human, Mouse, Rat

### BackGround:

This gene product is a protein tyrosine kinase involved in a specific subset of cytokine receptor signaling pathways. It has been found to be constitutively associated with the prolactin receptor and is required for responses to gamma interferon. Mice that do not express an active protein for this gene exhibit embryonic lethality associated with the absence of definitive erythropoiesis.

### Product:

1mg/ml in PBS with 0.02% sodium azide, 50% glycerol, pH7.2

### Molecular Weight:

131KDa

### Swiss-Prot:

O60674

### Purification&Purity:

The antibody was affinity-purified from rabbit antiserum by affinity-chromatography using epitope-specific immunogen and the purity is > 95% (by SDS-PAGE).

### Applications:

WB, 1:500 - 1:1000 | IHC, 1:50 - 1:200 | IF: 1:100 - 1:500 | IP: 1:50~1:200

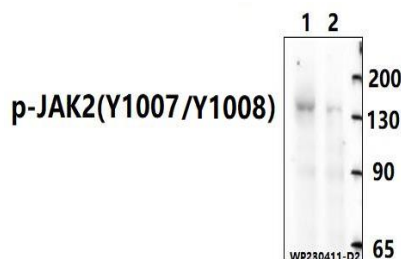
### Storage&Stability:

Store at 4 °C short term. Aliquot and store at -20 °C long term. Avoid freeze-thaw cycles.

### Specificity:

Phosphorylated Antibodies

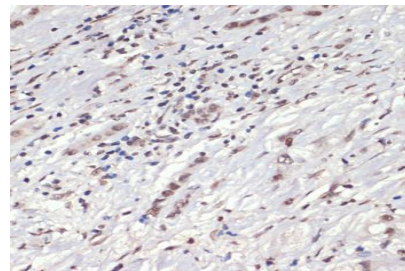
### DATA:



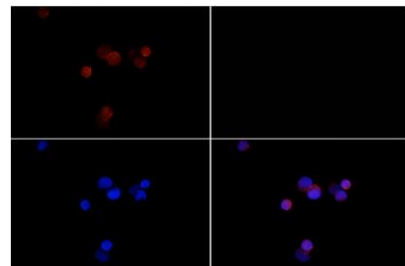
Western blot (WB) analysis of Phospho-JAK2-Y1007/1008 polyclonal antibody at 1:1000 dilution

Lane1:K562 treated with GM-CSF(100 ng/ml) at 37°C for 15 minutes whole cell lysate(30ug)

Lane2:K562 whole cell lysate(30ug)

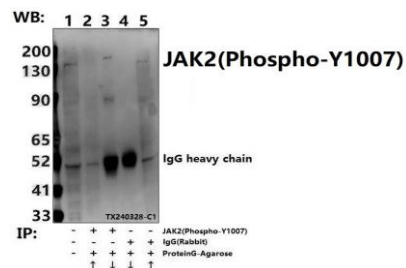


Immunohistochemistry of paraffin-embedded human liver cancer using Phospho-JAK2-Y1007/1008 antibody at dilution of 1:200. Perform microwave antigen retrieval with 10 mM Tris/EDTA buffer pH 9.0 before commencing with IHC staining protocol.



Immunofluores-

cence analysis of K562 cells using Phospho-JAK2-Y1007/1008 pAb at dilution of 1:200 (40x lens).



Immunoprecipitation of K562 cell lysates using Phospho-JAK2-Y1007/1008 pAb (Sepharose Bead Conjugate)#BD0048 (lane 2 and lane 3) and Nonspecific IgG Control (Sepharose Bead

### Bioworld Technology, Inc.

Add: 1660 South Highway 100, Suite 500 St. Louis Park, MN 55416, USA.

Email: [info@bioworld.com](mailto:info@bioworld.com)

Tel: 6123263284

Fax: 6122933841

### Bioworld technology, co. Ltd.

Add: No 9, weidi road Qixia District Nanjing, 210046, P. R. China.

Email: [info@biogot.com](mailto:info@biogot.com)

Tel: 0086-025-68037686

Fax: 0086-025-68035151



## PRODUCT DATA SHEET

Bioworld Technology, Inc.

Conjugate)#BD0048 (lane 4 and lane 5) .Lane 1 is 30% input. The western blot was probed using Phospho-JAK2-Y1007/1008 pAb.

**Note:**

For research use only, not for use in diagnostic procedure.

---

**Bioworld Technology, Inc.**

Add: 1660 South Highway 100, Suite 500 St. Louis Park,  
MN 55416, USA.

Email: [info@bioworld.com](mailto:info@bioworld.com)

Tel: 6123263284

Fax: 6122933841

**Bioworld technology, co. Ltd.**

Add: No 9, weidi road Qixia District Nanjing, 210046,  
P. R. China.

Email: [info@biogot.com](mailto:info@biogot.com)

Tel: 0086-025-68037686

Fax: 0086-025-68035151