

## Crk2 (phospho-Y221) polyclonal antibody

Catalog: BS4055

Host: Rabbit

Reactivity: Human

### BackGround:

Crk I and Crk II are encoded by the same gene, which undergoes alternative splicing to yield these two proteins, but differ in their biological activities. Crk II has less transforming activity than Crk I, although both Crk I and Crk II bind to many tyrosine-phosphorylated proteins that bind to GRB2. In addition, Crk II becomes rapidly tyrosine-phosphorylated in response to stimulation with insulin-like growth factor I (IGF-I) and might be involved in the IGF-I receptor signalling pathway.

### Product:

Rabbit IgG, 1mg/ml in PBS with 0.02% sodium azide, 50% glycerol, pH7.2

### Molecular Weight:

~ 34 kDa

### Swiss-Prot:

P46108

### Purification&Purity:

The antibody was affinity-purified from rabbit antiserum by affinity-chromatography using epitope-specific immunogen and the purity is > 95% (by SDS-PAGE).

### Applications:

WB: 1:500~1:1000

### Storage&Stability:

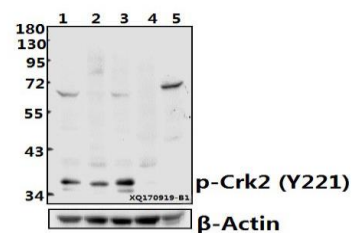
Store at 4 °C short term. Aliquot and store at -20 °C long

term. Avoid freeze-thaw cycles.

### Specificity:

Crk2 (phospho-Y221) polyclonal antibody detects endogenous levels of Crk2 protein only when phosphorylated at Tyr221.

### DATA:



Western blot (WB) analysis of Crk2 (phospho-Y221) pAb at 1:500 dilution

Lane1:A549 whole cell lysate(40ug)

Lane2:Hela whole cell lysate(40ug)

Lane3:MCF-7 whole cell lysate(40ug)

Lane4:The Kidney tissue lysate of Rat(40ug)

Lane5:The Kidney tissue lysate of Mouse(40ug)

### Note:

For research use only, not for use in diagnostic procedure.

### Bioworld Technology, Inc.

Add: 1660 South Highway 100, Suite 500 St. Louis Park, MN 55416, USA.

Email: [info@bioworld.com](mailto:info@bioworld.com)

Tel: 6123263284

Fax: 6122933841

### Bioworld technology, co. Ltd.

Add: No 9, weidi road Qixia District Nanjing, 210046, P. R. China.

Email: [info@biogot.com](mailto:info@biogot.com)

Tel: 0086-025-68037686

Fax: 0086-025-68035151