

## CKR-5 (phospho-S349) polyclonal antibody

Catalog: BS4032

Host: Rabbit

Reactivity: Human, Mouse, Rat

### BackGround:

The CC chemokine receptor 5 (CCR5) is a member of the CC-chemokine receptor family, and has the characteristic structure of a 7 transmembrane G protein-coupled receptor (GPCR). CCR5 regulates trafficking and effector functions of memory/effector Th1 cells, macrophages, NK cells, and immature dendritic cells. CCR5 and its ligands play an important role in viral pathogenesis. CCR5 represents the co-receptor for macrophage (M) and dual (T cell and M)-tropic immunodeficiency viruses. Together with the CD4 binding receptor, CCR5 plays a critical role in HIV entry into the target cells.

### Product:

Rabbit IgG, 1mg/ml in PBS with 0.02% sodium azide, 50% glycerol, pH7.2

### Molecular Weight:

~ 41 kDa

### Swiss-Prot:

P51681

### Purification&Purity:

The antibody was affinity-purified from rabbit antiserum by affinity-chromatography using epitope-specific immunogen and the purity is > 95% (by SDS-PAGE).

### Applications:

WB: 1:500~1:1000

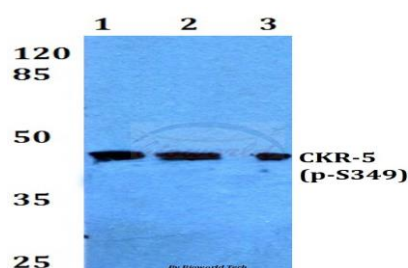
### Storage&Stability:

Store at 4 °C short term. Aliquot and store at -20 °C long term. Avoid freeze-thaw cycles.

### Specificity:

p-CKR-5 (S349) polyclonal antibody detects endogenous levels of CKR-5 protein only when phosphorylated at Ser349.

### DATA:



Western blot (WB) analysis of p-CKR-5 (S349) polyclonal antibody at 1:500 dilution

Lane1: HeLa cell lysate treated with PMA(100nM, 15mins)

Lane2: sp2/0 cell lysate treated with PMA(100nM, 15mins)

Lane3: PC12 cell lysate treated with PMA(100nM, 15mins)

### Note:

For research use only, not for use in diagnostic procedure.

### Bioworld Technology, Inc.

Add: 1660 South Highway 100, Suite 500 St. Louis Park, MN 55416, USA.

Email: [info@bioworld.com](mailto:info@bioworld.com)

Tel: 6123263284

Fax: 6122933841

### Bioworld technology, co. Ltd.

Add: No 9, weidi road Qixia District Nanjing, 210046, P. R. China.

Email: [info@biogot.com](mailto:info@biogot.com)

Tel: 0086-025-68037686

Fax: 0086-025-68035151