

## C/EBP- $\beta$ (phospho-T235/188) polyclonal antibody

Catalog: BS4029

Host: Rabbit

Reactivity: Human

### Background:

C/EBP  $\beta$  is a member of the C/EBP transcription factor family. The C/EBP  $\beta$  gene encodes several isoforms, which have truncated transcription activation domains by the alternative translational initiation at multiple AUG start sites. Initiation of translation at the in-frame AUGs forms four C/EBP  $\beta$  isoforms. C/EBP  $\beta$  is also known as interleukin 6-dependent DNA-binding protein (IL6DBP), liver activator protein (LAP) or liver-enriched transcriptional activator protein transcription factor 5 (TCF5). C/EBP  $\beta$  contributes to the regulation of the acute phase response in hepatocytes. Stat3 has an important function in IL-6-mediated transcription of the C/EBP  $\beta$  gene that has direct implication for acute phase response in liver cells. The 35 kDa C/EBP  $\beta$  form requires phosphorylation for its DNA binding ability, and increased binding of C/EBP  $\beta$  isoforms during acute-phase reaction occurs through its upregulation and structural modification.

### Product:

Rabbit IgG, 1mg/ml in PBS with 0.02% sodium azide, 50% glycerol, pH7.2

### Molecular Weight:

~ 38 kDa

### Swiss-Prot:

P17676

### Purification&Purity:

The antibody was affinity-purified from rabbit antiserum by affinity-chromatography using epitope-specific immunogen and the purity is > 95% (by SDS-PAGE).

### Applications:

WB: 1:500~1:1000

IHC: 1:50~1:200

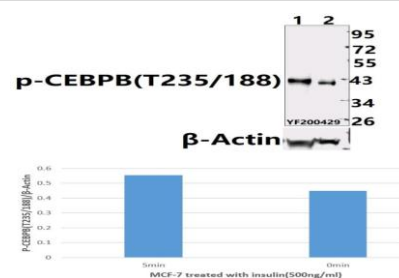
### Storage&Stability:

Store at 4 °C short term. Aliquot and store at -20 °C long term. Avoid freeze-thaw cycles.

### Specificity:

p-C/EBP- $\beta$  (T235/188) polyclonal antibody detects endogenous levels of human LAP only when phosphorylated at Thr235, mouse and rat LAP only when phosphorylated at Thr188, and LIP only when phosphorylated at Thr37.

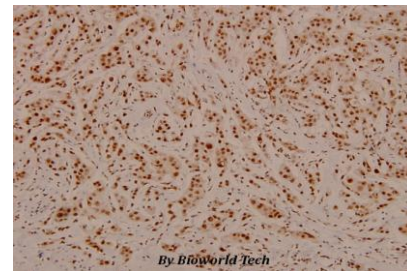
### DATA:



Western blot (WB) analysis of C/EBP- $\beta$  (phospho-T235/188) pAb at 1:500 dilution

Lane1: MCF-7 treated with insulin(500ng/ml, 5min) whole cell lysate(40ug)

Lane2: MCF-7 treated with insulin(500ng/ml, 0min) whole cell lysate (40ug)



Immunohistochemistry (IHC) analyzes of p-C/EBP- $\beta$  (T235/188) pAb in paraffin-embedded human breast carcinoma tissue at 1:100.

### Note:

For research use only, not for use in diagnostic procedure.

### Bioworld Technology, Inc.

Add: 1660 South Highway 100, Suite 500 St. Louis Park, MN 55416, USA.

Email: [info@bioworld.com](mailto:info@bioworld.com)

Tel: 6123263284

Fax: 6122933841

### Bioworld technology, co. Ltd.

Add: No 9, weidi road Qixia District Nanjing, 210046, P. R. China.

Email: [info@biogot.com](mailto:info@biogot.com)

Tel: 0086-025-68037686

Fax: 0086-025-68035151



## PRODUCT DATA SHEET

Bioworld Technology, Inc.

---

---

### **Bioworld Technology, Inc.**

**Add:** 1660 South Highway 100, Suite 500 St. Louis Park,  
MN 55416, USA.

**Email:** [info@bioworld.com](mailto:info@bioworld.com)

**Tel:** 6123263284

**Fax:** 6122933841

### **Bioworld technology, co. Ltd.**

**Add:** No 9, weidi road Qixia District Nanjing, 210046,  
P. R. China.

**Email:** [info@biogot.com](mailto:info@biogot.com)

**Tel:** 0086-025-68037686

**Fax:** 0086-025-68035151