

RAB11A Rabbit monoclonal antibody

Catalog: BS40019

Host: Rabbit

Reactivity: Human Mouse Rat

BackGround:

Rab11a, Rab11b and Rab25 are members of the Rab11 family of small Ras-like GTPases. Rab11 (isoforms Rab11a and Rab11b) functions as a key regulator in the recycling of perinuclear, plasma membrane and Golgi compartment endosomes. Despite some overlap, distinct differences exist between Rab11a and Rab11b in both their cellular distribution and functional roles. Rab11a is ubiquitously expressed while Rab11b is found mainly in the heart and brain. Like other Rab proteins, Rab11 exerts its function via interactions with Rab11 family interacting proteins (FIPs).

Product:

Rabbit IgG, 1mg/ml in PBS with 0.02% sodium azide, 50% glycerol, pH7.2.

Molecular Weight:

~ 26 kDa

Swiss-Prot:

P62491

Purification&Purity:

Affinity-chromatography

Applications:

WB 1:500~1:2000 IP 1:30

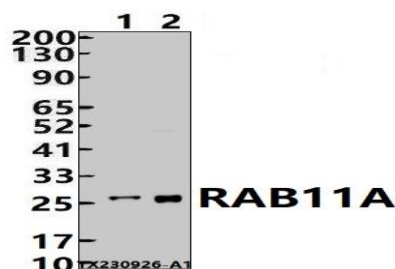
Storage&Stability:

Store at 4 °C short term. Aliquot and store at -20 °C long term. Avoid freeze-thaw cycles.

Specificity:

RAB11A Antibody detects endogenous levels of total RAB11A

DATA:



Western blot (WB) analysis of RAB11A Rabbit monoclonal antibody at 1:500 dilution

Lane1:Hela whole cell lysate(30ug)

Lane2:K562 whole cell lysate(30ug)

Note:

For research use only, not for use in diagnostic procedure.

Bioworld Technology, Inc.

Add: 1660 South Highway 100, Suite 500 St. Louis Park, MN 55416,USA.

Email: info@bioworld.com

Tel: 6123263284

Fax: 6122933841

Bioworld technology, co. Ltd.

Add: No 9, weidi road Qixia District Nanjing, 210046, P. R. China.

Email: info@biogol.com

Tel: 0086-025-68037686

Fax: 0086-025-68035151