

LDL Receptor Rabbit monoclonal antibody

Catalog: BS40018

Host: Rabbit

Reactivity: Human Mouse

BackGround:

Binds LDL, the major cholesterol-carrying lipoprotein of plasma, and transports it into cells by endocytosis. In order to be internalized, the receptor-ligand complexes must first cluster into clathrin-coated pits. In case of HIV-1 infection, functions as a receptor for extracellular Tat in neurons, mediating its internalization in uninfected cells.

Product:

Rabbit IgG, 1mg/ml in PBS with 0.02% sodium azide, 50% glycerol, pH7.2.

Molecular Weight:

~ 130 kDa

Swiss-Prot:

P01130

Purification&Purity:

Affinity-chromatography

Applications:

WB 1:1000~1:2000 IHC 1:100~1:500

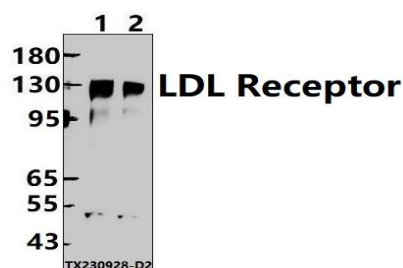
Storage&Stability:

Store at 4 °C short term. Aliquot and store at -20 °C long term. Avoid freeze-thaw cycles.

Specificity:

LDL Receptor Antibody detects endogenous levels of total LDL Receptor

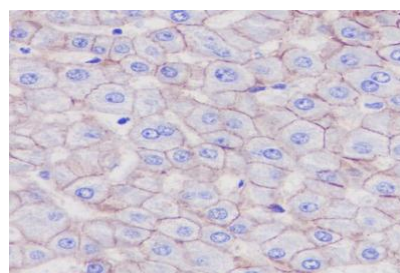
DATA:



Western blot (WB) analysis of LDL Receptor Rabbit monoclonal antibody at 1:500 dilution

Lane1:HepG2 whole cell lysate(30ug)

Lane2:A549 whole cell lysate(30ug)



Immunohistochemical analysis of paraffin-embedded human liver carcinoma, using LDL Receptor Antibody .

Note:

For research use only, not for use in diagnostic procedure.

Bioworld Technology, Inc.

Add: 1660 South Highway 100, Suite 500 St. Louis Park, MN 55416, USA.

Email: info@bioworld.com

Tel: 6123263284

Fax: 6122933841

Bioworld technology, co. Ltd.

Add: No 9, weidi road Qixia District Nanjing, 210046, P. R. China.

Email: info@biogol.com

Tel: 0086-025-68037686

Fax: 0086-025-68035151