

## Calmodulin Rabbit monoclonal antibody

Catalog: BS40017

Host: Rabbit

Reactivity: Human Mouse Rat

### BackGround:

Calmodulin is the archetype of the family of calcium-modulated proteins of which nearly 20 members have been found. They are identified by their occurrence in the cytosol or on membranes facing the cytosol and by a high affinity for calcium.

### Product:

Rabbit IgG, 1mg/ml in PBS with 0.02% sodium azide, 50% glycerol, pH7.2.

### Molecular Weight:

~ 20 kDa

### Swiss-Prot:

P62158

### Purification&Purity:

Affinity-chromatography

### Applications:

WB 1:500~1:2000 IHC 1:50~1:200 ICC/IF 1:50~1:200  
IP 1:50 FC 1:50

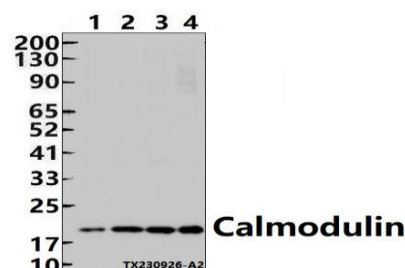
### Storage&Stability:

Store at 4 °C short term. Aliquot and store at -20 °C long term. Avoid freeze-thaw cycles.

### Specificity:

Calmodulin Antibody detects endogenous levels of total Calmodulin

### DATA:



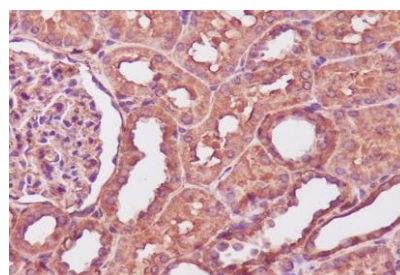
Western blot (WB) analysis of Calmodulin Rabbit monoclonal antibody at 1:500 dilution

Lane1:The Liver tissue lysate of Rat(30ug)

Lane2:The Kidney tissue lysate of Mouse(30ug)

Lane3:3T3-L1 whole cell lysate(30ug)

Lane4:MCF-7 whole cell lysate(30ug)



Immunohistochemical analysis of paraffin-embedded human kidney, using Calmodulin Antibody

### Note:

For research use only, not for use in diagnostic procedure.

### Bioworld Technology, Inc.

Add: 1660 South Highway 100, Suite 500 St. Louis Park, MN 55416, USA.

Email: [info@bioworld.com](mailto:info@bioworld.com)

Tel: 6123263284

Fax: 6122933841

### Bioworld technology, co. Ltd.

Add: No 9, weidi road Qixia District Nanjing, 210046, P. R. China.

Email: [info@biogot.com](mailto:info@biogot.com)

Tel: 0086-025-68037686

Fax: 0086-025-68035151