

SATB2 Rabbit monoclonal antibody

Catalog: BS40014

Host: Rabbit

Reactivity: Human Mouse Rat

BackGround:

Binds to DNA, at nuclear matrix- or scaffold-associated regions. Thought to recognize the sugar-phosphate structure of double-stranded DNA. Transcription factor controlling nuclear gene expression, by binding to matrix attachment regions (MARs) of DNA and inducing a local chromatin-loop remodeling. Acts as a docking site for several chromatin remodeling enzymes and also by recruiting corepressors (HDACs) or coactivators (HATs) directly to promoters and enhancers.

Product:

Rabbit IgG, 1mg/ml in PBS with 0.02% sodium azide, 50% glycerol, pH7.2.

Molecular Weight:

~ 85 kDa

Swiss-Prot:

Q9UPW6

Purification&Purity:

Affinity-chromatography

Applications:

WB 1:500~1:2000 IHC 1:50~1:200 ICC/IF 1:50~1:200

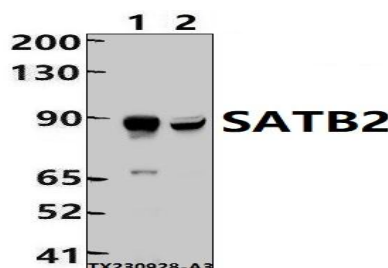
Storage&Stability:

Store at 4 °C short term. Aliquot and store at -20 °C long term. Avoid freeze-thaw cycles.

Specificity:

SATB2 Antibody detects endogenous levels of total SATB2

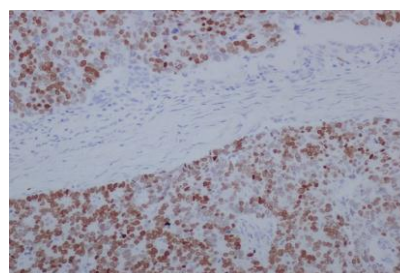
DATA:



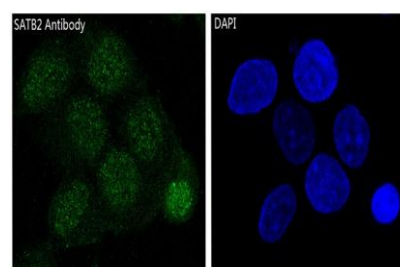
Western blot (WB) analysis of SATB2 Rabbit monoclonal antibody at 1:500 dilution

Lane1:THP-1 whole cell lysate(30ug)

Lane2:HEK293T whole cell lysate(30ug)



Immunohistochemical analysis of paraffin-embedded human stomach cancer, using SATB2 Antibody.



Immunofluorescent analysis of SH-SY5Y cells, using SATB2 Antibody.

Note:

For research use only, not for use in diagnostic procedure.

Bioworld Technology, Inc.

Add: 1660 South Highway 100, Suite 500 St. Louis Park, MN 55416,USA.

Email: info@bioworld.com

Tel: 6123263284

Fax: 6122933841

Bioworld technology, co. Ltd.

Add: No 9, weidi road Qixia District Nanjing, 210046, P. R. China.

Email: info@biogot.com

Tel: 0086-025-68037686

Fax: 0086-025-68035151