

PP2A alpha + beta Rabbit monoclonal antibody

Catalog: BS40008

Host: Rabbit

Reactivity: Human Mouse Rat

BackGround:

Protein phosphatase type 2A (PP2A) is an essential protein serine/threonine phosphatase that is conserved in all eukaryotes. PP2A is a key enzyme within various signal transduction pathways as it regulates fundamental cellular activities such as DNA replication, transcription, translation, metabolism, cell cycle progression, cell division, apoptosis and development. The core enzyme consists of catalytic C and regulatory A (or PR65) subunits, with each subunit represented by α and β isoforms.

Product:

Rabbit IgG, 1mg/ml in PBS with 0.02% sodium azide, 50% glycerol, pH7.2.

Molecular Weight:

~ 35 kDa

Swiss-Prot:

P62714/P67775

Purification&Purity:

Affinity-chromatography

Applications:

WB 1:500~1:2000 IHC 1:50~1:200 ICC/IF 1:50~1:200
IP 1:50

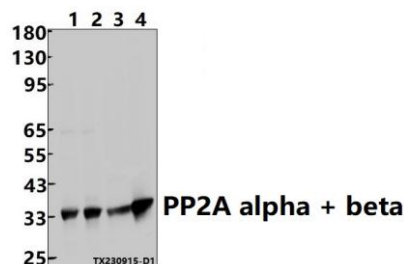
Storage&Stability:

Store at 4 °C short term. Aliquot and store at -20 °C long term. Avoid freeze-thaw cycles.

Specificity:

PP2A alpha + beta Antibody detects endogenous levels of total PP2A alpha + beta

DATA:



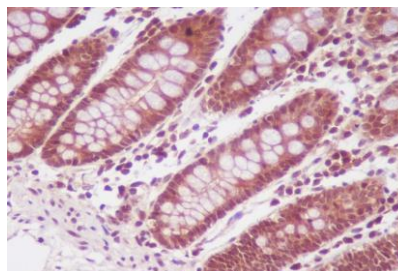
Western blot (WB) analysis of PP2A alpha + beta Rabbit monoclonal antibody at 1:500 dilution

Lane1:Hela whole cell lysate(30ug)

Lane2:HEK293T whole cell lysate(30ug)

Lane3:The Liver tissue lysate of Mouse(30ug)

Lane4:The Brain tissue lysate of Rat(30ug)



Immunohistochemical analysis of paraffin-embedded human colon, using PP2A alpha + beta Antibody.

Note:

For research use only, not for use in diagnostic procedure.

Bioworld Technology, Inc.

Add: 1660 South Highway 100, Suite 500 St. Louis Park, MN 55416, USA.

Email: info@bioworld.com

Tel: 6123263284

Fax: 6122933841

Bioworld technology, co. Ltd.

Add: No 9, weidi road Qixia District Nanjing, 210046, P. R. China.

Email: info@biogot.com

Tel: 0086-025-68037686

Fax: 0086-025-68035151