

CD86 Rabbit monoclonal antibody

Catalog: BS40005

Host: Rabbit

Reactivity: Human Mouse

BackGround:

Receptor involved in the costimulatory signal essential for T-lymphocyte proliferation and interleukin-2 production, by binding CD28 or CTLA-4. May play a critical role in the early events of T-cell activation and costimulation of naive T-cells, such as deciding between immunity and anergy that is made by T-cells within 24 hours after activation. Isoform 2 interferes with the formation of CD86 clusters, and thus acts as a negative regulator of T-cell activation.

Product:

Rabbit IgG, 1mg/ml in PBS with 0.02% sodium azide, 50% glycerol, pH7.2.

Molecular Weight:

~ 70 kDa

Swiss-Prot:

P42081

Purification&Purity:

Affinity-chromatography

Applications:

WB 1:1000~1:2000 IHC 1:50~1:200 ICC/IF 1:50~1:200
IP 1:50 FC 1:50

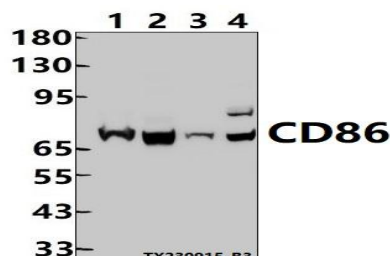
Storage&Stability:

Store at 4 °C short term. Aliquot and store at -20 °C long term. Avoid freeze-thaw cycles.

Specificity:

CD86 Antibody detects endogenous levels of total CD86

DATA:



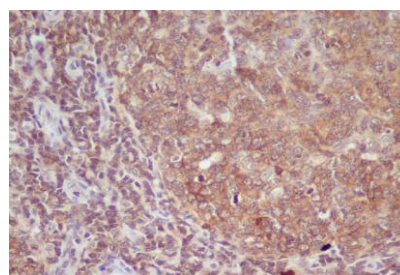
Western blot (WB) analysis of CD86 Rabbit monoclonal antibody at 1:500 dilution

Lane1:Raji whole cell lysate(30ug)

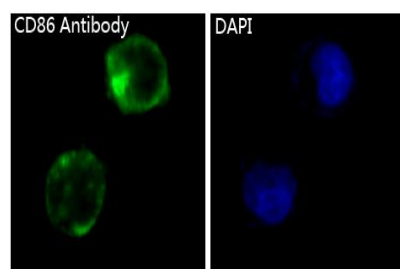
Lane2:HuT78 whole cell lysate(30ug)

Lane3:The Lung tissue lysate of Mouse(30ug)

Lane4:CT-26 whole cell lysate(30ug)



Immunohistochemical analysis of paraffin-embedded human tonsil, using CD86 Antibody .



Immunofluorescent analysis of K562 cells, using CD86 Antibody .

Note:

For research use only, not for use in diagnostic procedure.

Bioworld Technology, Inc.

Add: 1660 South Highway 100, Suite 500 St. Louis Park, MN 55416,USA.

Email: info@bioworld.com

Tel: 6123263284

Fax: 6122933841

Bioworld technology, co. Ltd.

Add: No 9, weidi road Qixia District Nanjing, 210046, P. R. China.

Email: info@biogot.com

Tel: 0086-025-68037686

Fax: 0086-025-68035151