

MMP9 Rabbit monoclonal antibody

Catalog: BS40004

Host: Rabbit

Reactivity: Human Rat

BackGround:

MMP9 May play an essential role in local proteolysis of the extracellular matrix and in leukocyte migration. Could play a role in bone osteoclastic resorption. Cleaves KiSS1 at a Gly-|-Leu bond. Cleaves type IV and type V collagen into large C-terminal three quarter fragments and shorter N-terminal one quarter fragments. Degrades fibronectin but not laminin or Pz-peptide. Belongs to the peptidase M10A family.

Product:

Rabbit IgG, 1mg/ml in PBS with 0.02% sodium azide, 50% glycerol, pH7.2.

Molecular Weight:

~ 84, 92 kDa

Swiss-Prot:

P14780

Purification&Purity:

Affinity-chromatography

Applications:

WB 1:500~1:2000 IHC 1:50~1:200 ICC/IF 1:50~1:200
FC 1:50

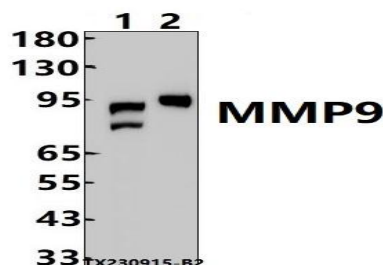
Storage&Stability:

Store at 4 °C short term. Aliquot and store at -20 °C long term. Avoid freeze-thaw cycles.

Specificity:

MMP9 Antibody detects endogenous levels of total MMP9

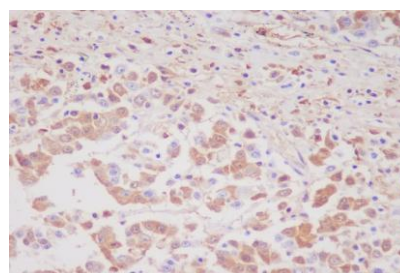
DATA:



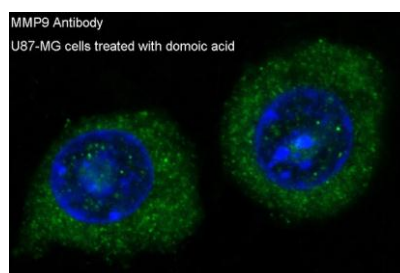
Western blot (WB) analysis of MMP9 Rabbit monoclonal antibody at 1:500 dilution

Lane1:HuT78 whole cell lysate(30ug)

Lane2:The Lung tissue lysate of Rat(30ug)



Immunohistochemical analysis of paraffin-embedded human colon cancer, using MMP9 Antibody.



Immunofluorescent analysis of U87-MG cells, using MMP9 Antibody.

Note:

For research use only, not for use in diagnostic procedure.

Bioworld Technology, Inc.

Add: 1660 South Highway 100, Suite 500 St. Louis Park, MN 55416,USA.

Email: info@bioworld.com

Tel: 6123263284

Fax: 6122933841

Bioworld technology, co. Ltd.

Add: No 9, weidi road Qixia District Nanjing, 210046, P. R. China.

Email: info@biogot.com

Tel: 0086-025-68037686

Fax: 0086-025-68035151