

## TLR2 Rabbit monoclonal antibody

Catalog: BS40002

Host: Rabbit

Reactivity: Human Mouse Rat

### BackGround:

Members of the Toll-like receptor (TLR) family, named for the closely related Toll receptor in *Drosophila*, play a pivotal role in innate immune responses (1-3). TLRs recognize conserved motifs found in various pathogens and mediate defense responses. Triggering of the TLR pathway leads to the activation of NF- $\kappa$ B and subsequent regulation of immune and inflammatory genes.

### Product:

Rabbit IgG, 1mg/ml in PBS with 0.02% sodium azide, 50% glycerol, pH7.2.

### Molecular Weight:

~ 88 kDa

### Swiss-Prot:

O60603

### Purification&Purity:

Affinity-chromatography

### Applications:

WB 1:500~1:2000

### Storage&Stability:

Store at 4 °C short term. Aliquot and store at -20 °C long term. Avoid freeze-thaw cycles.

### Specificity:

TLR2 Antibody detects endogenous levels of total TLR2

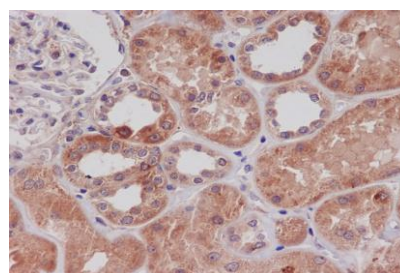
### DATA:



Western blot (WB) analysis of TLR2 Rabbit monoclonal antibody at 1:500 dilution

Lane1:HepG2 whole cell lysate(30ug)

Lane2:A549 whole cell lysate(30ug)



Immunohistochemical analysis of paraffin-embedded human kidney, using TLR2 Antibody.

### Note:

For research use only, not for use in diagnostic procedure.

### Bioworld Technology, Inc.

Add: 1660 South Highway 100, Suite 500 St. Louis Park, MN 55416, USA.

Email: [info@bioworld.com](mailto:info@bioworld.com)

Tel: 6123263284

Fax: 6122933841

### Bioworld technology, co. Ltd.

Add: No 9, weidi road Qixia District Nanjing, 210046, P. R. China.

Email: [info@biogot.com](mailto:info@biogot.com)

Tel: 0086-025-68037686

Fax: 0086-025-68035151