

Tyk 2 polyclonal antibody

Catalog: BS3976

Host: Rabbit

Reactivity: Human

BackGround:

Tyrosine kinase of the non-receptor type involved in numerous cytokines and interferons signaling, which regulates cell growth, development, cell migration, innate and adaptive immunity. Plays both structural and catalytic roles in numerous interleukins and interferons (IFN- α /beta) signaling. Associates with heterodimeric cytokine receptor complexes and activates STAT family members including STAT1, STAT3, STAT4 or STAT6. The heterodimeric cytokine receptor complexes are composed of (1) a TYK2-associated receptor chain (IFNAR1, IL12RB1, IL10RB or IL13RA1), and (2) a second receptor chain associated either with JAK1 or JAK2. In response to cytokine-binding to receptors, phosphorylates and activates receptors (IFNAR1, IL12RB1, IL10RB or IL13RA1), creating docking sites for STAT members. In turn, recruited STATs are phosphorylated by TYK2 (or JAK1/JAK2 on the second receptor chain), form homo- and heterodimers, translocate to the nucleus, and regulate cytokine/growth factor responsive genes. Negatively regulates STAT3 activity by promoting phosphorylation at a specific tyrosine that differs from the site used for signaling.

Product:

Rabbit IgG, 1mg/ml in PBS with 0.02% sodium azide, 50% glycerol, pH7.2.

Molecular Weight:

~ 134 kDa

Swiss-Prot:

P29597

Purification&Purity:

The antibody was affinity-purified from rabbit antiserum by affinity-chromatography using epitope-specific immunogen and the purity is > 95% (by SDS-PAGE).

Applications:

WB: 1:1000~1:2000

IP: 1:50~1:200

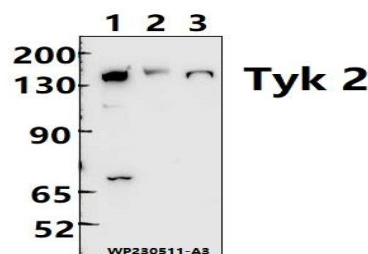
Storage&Stability:

Store at 4 °C short term. Aliquot and store at -20 °C long term. Avoid freeze-thaw cycles.

Specificity:

Tyk 2 polyclonal antibody detects endogenous levels of Tyk 2 protein.

DATA:

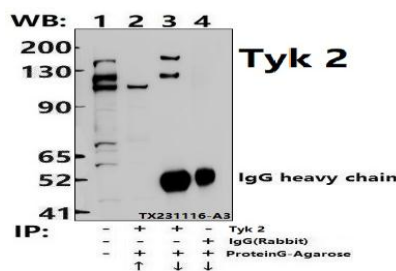


Western blot (WB) analysis of Tyk 2 polyclonal antibody at 1:1000 dilution

Lane1:SC7901 whole cell lysate(30ug)

Lane2:SK-OVCAR3 whole cell lysate(30ug)

Lane3:MCF-7 whole cell lysate(30ug)



Immunoprecipitation of MCF-7 cell lysates using Tyk 2 pAb (Sephacrose Bead Conjugate)#BD0048 (lane 2 and lane 3) and Nonspecific IgG Control (Sephacrose Bead Conjugate)#BD0048 (lane 4). Lane 1 is 30% input. The western blot was probed using Tyk 2 pAb.

Note:

For research use only, not for use in diagnostic procedure.

Bioworld Technology, Inc.

Add: 1660 South Highway 100, Suite 500 St. Louis Park, MN 55416, USA.

Email: info@bioworld.com

Tel: 6123263284

Fax: 6122933841

Bioworld technology, co. Ltd.

Add: No 9, weidi road Qixia District Nanjing, 210046, P. R. China.

Email: info@biogot.com

Tel: 0086-025-68037686

Fax: 0086-025-68035151



PRODUCT DATA SHEET

Bioworld Biotech Co., Ltd

Bioworld Technology, Inc.

Add: 1660 South Highway 100, Suite 500 St. Louis Park,
MN 55416, USA.

Email: info@bioworld.com

Tel: 6123263284

Fax: 6122933841

Bioworld technology, co. Ltd.

Add: No 9, weidi road Qixia District Nanjing, 210046,
P. R. China.

Email: info@biogot.com

Tel: 0086-025-68037686

Fax: 0086-025-68035151