

## Neuromedin-U (I174) polyclonal antibody

Catalog: BS3892

Host: Rabbit

Reactivity: Human, Mouse, Rat

### BackGround:

Neuromedin U (NmU) is a vertebrate peptide which stimulates uterine smooth muscle contraction and causes selective vasoconstriction. Like most other active peptides, it is proteolytically processed from a larger precursor protein. The mature peptides are 8 (NmU-8) to 25 (NmU-25) residues long and C-terminally amidated. The sequence of the C-terminal extremity of NmU is extremely well conserved across species.

### Product:

Rabbit IgG, 1mg/ml in PBS with 0.02% sodium azide, 50% glycerol, pH7.2

### Molecular Weight:

~ 20 kDa

### Swiss-Prot:

P48645

### Purification&Purity:

The antibody was affinity-purified from rabbit antiserum by affinity-chromatography using epitope-specific immunogen and the purity is > 95% (by SDS-PAGE).

### Applications:

WB: 1:500~1:1000

IHC: 1:50~1:200

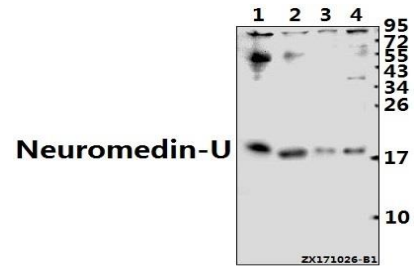
### Storage&Stability:

Store at 4 °C short term. Aliquot and store at -20 °C long term. Avoid freeze-thaw cycles.

### Specificity:

Neuromedin-U (I174) polyclonal antibody detects endogenous levels of Neuromedin-U protein.

### DATA:



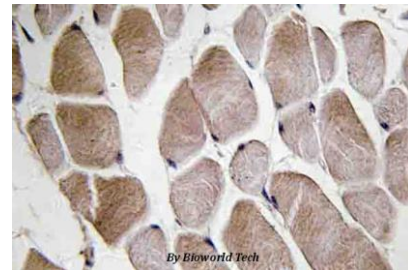
Western blot (WB) analysis of Neuromedin-U (I174) pAb at 1:500 dilution

Lane1:CT26 whole cell lysate(40ug)

Lane2:C6 whole cell lysate(40ug)

Lane3:K562 whole cell lysate(10ug)

Lane4:HEK293T whole cell lysate(10ug)



Immunohistochemistry (IHC) analyzes of Neuromedin-U (I174) pAb in paraffin-embedded human skeletal muscle tissue.

### Note:

For research use only, not for use in diagnostic procedure.

### Bioworld Technology, Inc.

Add: 1660 South Highway 100, Suite 500 St. Louis Park, MN 55416, USA.

Email: [info@bioworld.com](mailto:info@bioworld.com)

Tel: 6123263284

Fax: 6122933841

### Bioworld technology, co. Ltd.

Add: No 9, weidi road Qixia District Nanjing, 210046, P. R. China.

Email: [info@biogot.com](mailto:info@biogot.com)

Tel: 0086-025-68037686

Fax: 0086-025-68035151