

MDFI (P134) polyclonal antibody

Catalog: BS3882

Host: Rabbit

Reactivity: Human, Mouse, Rat

BackGround:

MDFI is a transcription factor that negatively regulates other myogenic family proteins. Studies of the mouse homolog, I-mf, show that it interferes with myogenic factor function by masking nuclear localization signals and preventing DNA binding. Knockout mouse studies show defects in the formation of vertebrae and ribs that also involve cartilage formation in these structures. MDFI also interfere with the DNA-binding activity of MyoD family members and plays an important role in trophoblast and chondrogenic differentiation.

Product:

Rabbit IgG, 1mg/ml in PBS with 0.02% sodium azide, 50% glycerol, pH7.2

Molecular Weight:

~ 25 kDa

Swiss-Prot:

Q99750

Purification&Purity:

The antibody was affinity-purified from rabbit antiserum by affinity-chromatography using epitope-specific immunogen and the purity is > 95% (by SDS-PAGE).

Applications:

WB: 1:500~1:1000

IF 1:50~1:200

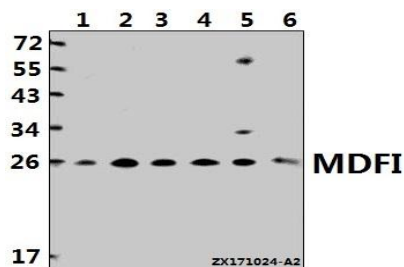
Storage&Stability:

Store at 4 °C short term. Aliquot and store at -20 °C long term. Avoid freeze-thaw cycles.

Specificity:

MDFI (P134) polyclonal antibody detects endogenous levels of MDFI protein.

DATA:



Western blot (WB) analysis of MDFI (P134) pAb at 1:500 dilution

Lane1:SGC7901 whole cell lysate(40ug)

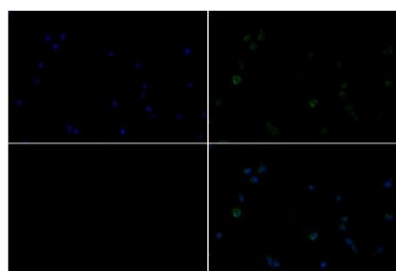
Lane2:PC3 whole cell lysate(40ug)

Lane3:HepG2 whole cell lysate(40ug)

Lane4:HCT116 whole cell lysate(40ug)

Lane5:C6 whole cell lysate(40ug)

Lane6:3T3-L1 whole cell lysate(40ug)



Immunofluorescence analysis of PC3 cells using MDFI (P134) pAb at dilution of 1:200.

Note:

For research use only, not for use in diagnostic procedure.

Bioworld Technology, Inc.

Add: 1660 South Highway 100, Suite 500 St. Louis Park, MN 55416, USA.

Email: info@bioworld.com

Tel: 6123263284

Fax: 6122933841

Bioworld technology, co. Ltd.

Add: No 9, weidi road Qixia District Nanjing, 210046, P. R. China.

Email: info@biogot.com

Tel: 0086-025-68037686

Fax: 0086-025-68035151