

## Laminin-R (Q215) polyclonal antibody

Catalog: BS3689

Host: Rabbit

Reactivity: Human, Mouse, Rat

### Background:

Laminin receptor (Laminin-R) has a heterodimeric structure similar to that of receptors for other extracellular matrix proteins such as Fibronectin and Vitronectin. Incorporation of Laminin-R into lysosomal membranes makes it possible for lysosomes to attach to surfaces coated with Laminin. This and other properties identify Laminin-R as a member of the integrin family of cell adhesion receptors. The Laminin-R precursor is a polypeptide whose expression is consistently upregulated in aggressive carcinoma. Laminin-R (also known as colon carcinoma laminin-binding protein) and is found at nine-fold higher levels in colon carcinoma than in adjacent normal colonic epithelium. Additionally, the level of the Laminin-R is higher in the lung cancer cell line than in the lung cell line.

### Product:

Rabbit IgG, 1mg/ml in PBS with 0.02% sodium azide, 50% glycerol, pH7.2

### Molecular Weight:

~ 40 kDa

### Swiss-Prot:

P08865

### Purification&Purity:

The antibody was affinity-purified from rabbit antiserum by affinity-chromatography using epitope-specific immunogen and the purity is > 95% (by SDS-PAGE).

### Applications:

WB: 1:500~1:1000

IHC: 1:50~1:200

IF: 1:50~1:200

### Storage&Stability:

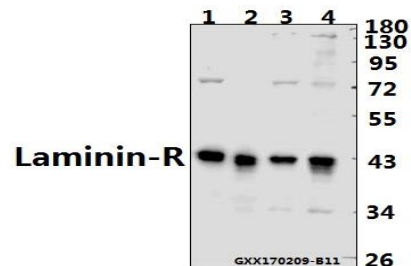
Store at 4 °C short term. Aliquot and store at -20 °C long term. Avoid freeze-thaw cycles.

### Specificity:

Laminin-R (Q215) polyclonal antibody detects endoge-

nous levels of Laminin-R protein.

### DATA:



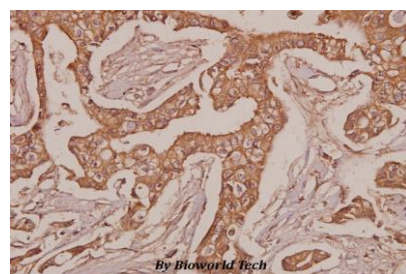
Western blot (WB) analysis of Laminin-R (Q215) polyclonal antibody at 1:500 dilution

Lane1:CT26 whole cell lysate(40ug)

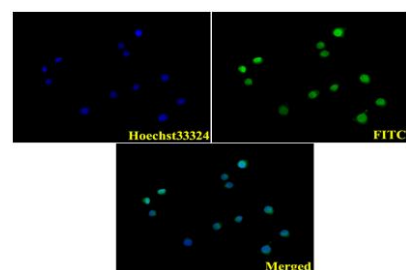
Lane2:PC12 whole cell lysate(40ug)

Lane3:A549 whole cell lysate(40ug)

Lane4:HEK293T whole cell lysate(40ug)



Immunohistochemistry (IHC) analyzes of Laminin-R (Q215) pAb in paraffin-embedded human breast carcinoma tissue at 1:50.



IF image of BS3689 stained A549 cells. The cells were 4% paraformaldehyde fixed (20 min) and then incubated in 10% normal goat serum for 1h to permeabilise the cells and block non-specific protein-protein interactions. The cells were then incubated with the antibody Laminin-R (Q215) #BS3689(1:100) at 10 µg/ml overnight at +4 °C. The sec-

### Bioworld Technology, Inc.

Add: 1660 South Highway 100, Suite 500 St. Louis Park, MN 55416, USA.

Email: [info@bioworld.com](mailto:info@bioworld.com)

Tel: 6123263284

Fax: 6122933841

### Bioworld technology, co. Ltd.

Add: No 9, weidi road Qixia District Nanjing, 210046, P. R. China.

Email: [info@biogot.com](mailto:info@biogot.com)

Tel: 0086-025-68037686

Fax: 0086-025-68035151



## PRODUCT DATA SHEET

Bioworld Technology, Inc.

Secondary antibody (Green) was Goat Anti-Rabbit IgG (H+L) FITC #BS10950 used at a 1/1000 dilution for 1h. Hoechst33342 #BD5011 was used to stain the cell nuclei (blue).

**Note:**

For research use only, not for use in diagnostic procedure.

---

**Bioworld Technology, Inc.**

Add: 1660 South Highway 100, Suite 500 St. Louis Park,  
MN 55416, USA.

Email: [info@bioworld.com](mailto:info@bioworld.com)

Tel: 6123263284

Fax: 6122933841

**Bioworld technology, co. Ltd.**

Add: No 9, weidi road Qixia District Nanjing, 210046,  
P. R. China.

Email: [info@biogot.com](mailto:info@biogot.com)

Tel: 0086-025-68037686

Fax: 0086-025-68035151