

## PI3K p85 $\alpha$ (Q498) polyclonal antibody

Catalog: BS3678

Host: Rabbit

Reactivity: Human, Mouse, Rat

### BackGround:

The enzyme phosphatidylinositol 3 kinase (PI3 kinase) is a lipid kinase that generates phosphatidylinositol 3, 4, 5-triphosphate in response to receptor activation in many signal transduction pathways. Class IA PI3Ks exist as a heterodimer of a catalytic 110 kDa (p110) and a regulatory p85 subunit (e.g. p85 alpha). p85 alpha is an adaptor molecule that regulates the activity of the catalytic p110 subunit by binding to phosphorylated receptor tyrosine kinases (RTKs) through its SH2 domain and mediating the interaction between p110 and the plasma membrane. p85 alpha is necessary for insulin-stimulated increase in glucose uptake and glycogen synthesis in insulin-sensitive tissues.

### Product:

Rabbit IgG, 1mg/ml in PBS with 0.02% sodium azide, 50% glycerol, pH7.2

### Molecular Weight:

~ 85 kDa

### Swiss-Prot:

P27986

### Purification&Purity:

The antibody was affinity-purified from rabbit antiserum by affinity-chromatography using epitope-specific immunogen and the purity is > 95% (by SDS-PAGE).

### Applications:

WB: 1:500~1:1000

IHC: 1:50~1:200

### Storage&Stability:

Store at 4 °C short term. Aliquot and store at -20 °C long term. Avoid freeze-thaw cycles.

### Specificity:

PI 3-kinase p85 $\alpha$  (Q498) polyclonal antibody detects endogenous levels of PI 3-kinase p85 $\alpha$  protein.

### DATA:



Western blot (WB) analysis of PI3K p85 $\alpha$  (Q498) pAb at 1:500 dilution

Lane1:A549 whole cell lysate(40ug)

Lane2:HEK293T whole cell lysate(40ug)

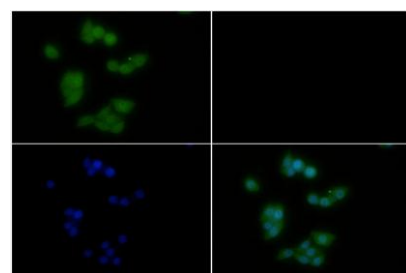
Lane3:HeLa whole cell lysate(40ug)

Lane4:The Brain tissue lysate of Rat(40ug)

Lane5:The Lung tissue lysate of Mouse(40ug)



Immunohistochemistry (IHC) analyzes of PI 3-kinase p85 $\alpha$  (Q498) pAb in paraffin-embedded human lung carcinoma tissue.



Immunofluorescence analysis of MCF-7 cells using PI 3-kinase p85 $\alpha$  (Q498) pAb at dilution of 1:200 (40x lens).

### Note:

For research use only, not for use in diagnostic procedure.

### Bioworld Technology, Inc.

Add: 1660 South Highway 100, Suite 500 St. Louis Park, MN 55416, USA.

Email: [info@bioworld.com](mailto:info@bioworld.com)

Tel: 6123263284

Fax: 6122933841

### Bioworld technology, co. Ltd.

Add: No 9, weidi road Qixia District Nanjing, 210046, P. R. China.

Email: [info@biogot.com](mailto:info@biogot.com)

Tel: 0086-025-68037686

Fax: 0086-025-68035151