

## 4E-BP1 (G39) polyclonal antibody

Catalog: BS3613

Host: Rabbit

Reactivity: Human, Mouse, Rat

### BackGround:

The translation of proteins from eukaryotic mRNA is initiated by the multisubunit complex eIF-4F, which associates with the mRNA 5' cap structure. eIF-4E, a component of eIF-4F, is responsible for binding to the 5' cap structure and for the assembly of the eIF-4F complex. The regulatory protein 4E-BP1, also referred to as PHAS-I, inhibits eIF-4E function. Phosphorylation of 4E-BP1 by S6 kinase p70, MAP kinases or PKCs causes the disassociation of 4E-BP1 from eIF-4E, promoting translation. A protein that is functionally related to 4E-BP1, designated 4E-BP2, also associates with eIF-4E.

### Product:

Rabbit IgG, 1mg/ml in PBS with 0.02% sodium azide, 50% glycerol, pH7.2

### Molecular Weight:

~ 15 to 20 kDa

### Swiss-Prot:

Q13541

### Purification&Purity:

The antibody was affinity-purified from rabbit antiserum by affinity-chromatography using epitope-specific immunogen and the purity is > 95% (by SDS-PAGE).

### Applications:

WB: 1:500~1:1000

IHC: 1:50~1:200

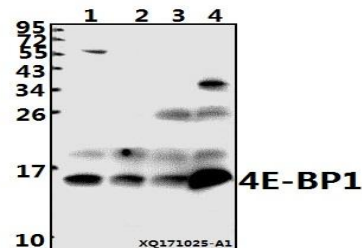
### Storage&Stability:

Store at 4 °C short term. Aliquot and store at -20 °C long term. Avoid freeze-thaw cycles.

### Specificity:

4E-BP1 (G39) polyclonal antibody detects endogenous levels of 4E-BP1 protein.

### DATA:



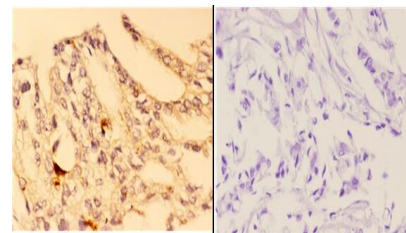
Western blot (WB) analysis of 4E-BP1 (G39) pAb at 1:500 dilution

Lane1:HEK293T whole cell lysate(40ug)

Lane2:PC3 whole cell lysate(40ug)

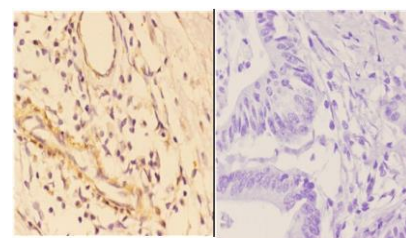
Lane3:The Ovary tissue lysate of Rat(40ug)

Lane4:The Embryo tissue lysate of Mouse(40ug)



BS3613  
Lot CA36131

Immunohistochemistry (IHC) analyzes of 4E-BP1 (G39) pAb in paraffin-embedded human breast carcinoma tissue at 1:50, showing cytoplasmic staining. Negative control (the right) Using PBS instead of primary antibody, secondary antibody is Goat Anti-Rabbit IgG-biotin followed by avidin-peroxidase.



BS3613  
Lot CA36131

Immunohistochemistry (IHC) analyzes of 4E-BP1 (G39) pAb in paraffin-embedded human colon carcinoma tissue at 1:50, showing cytoplasmic staining. Negative control (the right) Using PBS instead of primary antibody, secondary antibody is Goat Anti-Rabbit IgG-biotin followed by avidin-peroxidase.

### Bioworld Technology, Inc.

Add: 1660 South Highway 100, Suite 500 St. Louis Park, MN 55416, USA.

Email: [info@bioworld.com](mailto:info@bioworld.com)

Tel: 6123263284

Fax: 6122933841

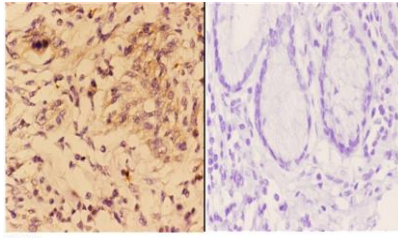
### Bioworld technology, co. Ltd.

Add: No 9, weidi road Qixia District Nanjing, 210046, P. R. China.

Email: [info@biogot.com](mailto:info@biogot.com)

Tel: 0086-025-68037686

Fax: 0086-025-68035151



BS3613  
Lot CA36131

Immunohistochemistry (IHC) analyzes of 4E-BP1 (G39) pAb in paraffin-embedded human esophageal carcinoma tissue at 1:50, showing cytoplasmic staining. Negative control (the right) Using PBS instead of primary antibody, secondary antibody is Goat Anti-Rabbit IgG-biotin followed by avidin-peroxidase.

**Note:**

For research use only, not for use in diagnostic procedure.

**Bioworld Technology, Inc.**

Add: 1660 South Highway 100, Suite 500 St. Louis Park,  
MN 55416, USA.

Email: [info@bioworld.com](mailto:info@bioworld.com)

Tel: 6123263284

Fax: 6122933841

**Bioworld technology, co. Ltd.**

Add: No 9, weidi road Qixia District Nanjing, 210046,  
P. R. China.

Email: [info@biogot.com](mailto:info@biogot.com)

Tel: 0086-025-68037686

Fax: 0086-025-68035151