

## Catenin- $\beta$ (Y30) polyclonal antibody

Catalog: BS3604

Host: Rabbit

Reactivity: Human,Rat,Mouse

### BackGround:

$\beta$ -Catenin is a key downstream effector in the Wnt signaling pathway. It is implicated in two major biological processes in vertebrates: early embryonic development and tumorigenesis. CK1 phosphorylates  $\beta$ -catenin at Ser45. This phosphorylation event primes  $\beta$ -catenin for subsequent phosphorylation by GSK-3 $\beta$ . GSK-3 $\beta$  destabilizes  $\beta$ -catenin by phosphorylating it at Ser33, Ser37, and Thr41. Mutations at these sites result in the stabilization of  $\beta$ -catenin protein levels and have been found in many tumor cell lines.

### Product:

Rabbit IgG, 1mg/ml in PBS with 0.02% sodium azide, 50% glycerol, pH7.2.

### Molecular Weight:

~ 92 kDa

### Swiss-Prot:

P35222

### Purification&Purity:

The antibody was affinity-purified from rabbit antiserum by affinity-chromatography using epitope-specific immunogen and the purity is > 95% (by SDS-PAGE).

### Applications:

WB: 1:1000~1:2000

IP: 1:50~1:200

IF: 1:100~1:500

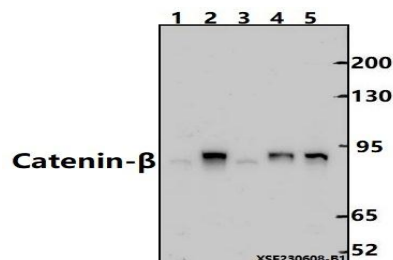
### Storage&Stability:

Store at 4 °C short term. Aliquot and store at -20 °C long term. Avoid freeze-thaw cycles.

### Specificity:

Catenin- $\beta$  (Y30) polyclonal antibody detects endogenous levels of Catenin- $\beta$  protein.

### DATA:



Western blot (WB) analysis of Catenin- $\beta$  (Y30) polyclonal antibody at 1:1000 dilution

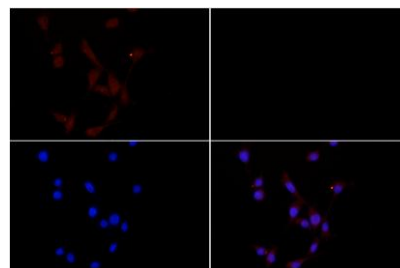
Lane1:PC12 whole cell lysate(30ug)

Lane2:HCT116 whole cell lysate(30ug)

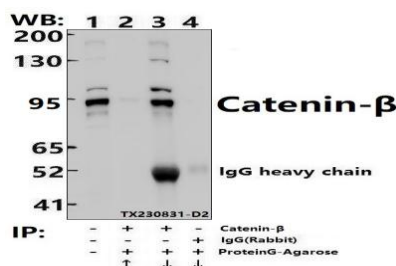
Lane3:MCF-7 whole cell lysate(30ug)

Lane4:3T3-L1 whole cell lysate(30ug)

Lane5:HEK293T whole cell lysate(30ug)



Immunofluorescence analysis of NIH-3T3 cells using Catenin- $\beta$  (Y30) pAb at dilution of 1:200 (40x lens).



Immunoprecipitation of Mouse Brain lysates using Catenin- $\beta$  (Y30) pAb (Sepharose Bead Conjugate)#BD0048 (lane 2 and lane 3) and Nonspecific IgG Control (Sepharose Bead Conjugate)#BD0048 (lane 4). Lane 1 is 30% input. The western blot was probed using Catenin- $\beta$  (Y30) pAb.

### Note:

### Bioworld Technology, Inc.

Add: 1660 South Highway 100, Suite 500 St. Louis Park, MN 55416, USA.

Email: [info@bioworld.com](mailto:info@bioworld.com)

Tel: 6123263284

Fax: 6122933841

### Bioworld technology, co. Ltd.

Add: No 9, weidi road Qixia District Nanjing, 210046, P. R. China.

Email: [info@biogot.com](mailto:info@biogot.com)

Tel: 0086-025-68037686

Fax: 0086-025-68035151



## PRODUCT DATA SHEET

Bioworld Technology, Inc.

---

For research use only, not for use in diagnostic procedure.

---

### **Bioworld Technology, Inc.**

Add: 1660 South Highway 100, Suite 500 St. Louis Park,  
MN 55416, USA.

Email: [info@bioworld.com](mailto:info@bioworld.com)

Tel: 6123263284

Fax: 6122933841

### **Bioworld technology, co. Ltd.**

Add: No 9, weidi road Qixia District Nanjing, 210046,  
P. R. China.

Email: [info@biogot.com](mailto:info@biogot.com)

Tel: 0086-025-68037686

Fax: 0086-025-68035151