

## Insulin (F49) polyclonal antibody

Catalog: BS3546

Host: Rabbit

Reactivity: Human, Mouse, Rat

### Background:

Insulin is one of the major regulatory hormones of intermediate metabolism throughout the body. The biological actions of this hormone involve integration of carbohydrate, protein, and lipid metabolism. Insulin enhances membrane transport of glucose, amino acids, and certain ions. It also promotes glycogen storage, formation of triglycerides and synthesis of proteins and nucleic acids. Immunocytochemical investigations have localized insulin in the B cells of pancreatic islets of Langerhans. Deficiency of insulin results in diabetes mellitus, one of the leading causes of morbidity and mortality in the general population. Insulin is also present in tumors of B cell origin such as insulinoma.

### Product:

Rabbit IgG, 1mg/ml in PBS with 0.02% sodium azide, 50% glycerol, pH7.2

### Molecular Weight:

~ 17 kDa

### Swiss-Prot:

P01308

### Purification&Purity:

The antibody was affinity-purified from rabbit antiserum by affinity-chromatography using epitope-specific immunogen and the purity is > 95% (by SDS-PAGE).

### Applications:

WB: 1:500~1:2000

IHC: 1:50~1:200

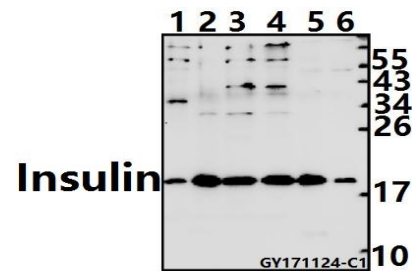
### Storage&Stability:

Store at 4 °C short term. Aliquot and store at -20 °C long term. Avoid freeze-thaw cycles.

### Specificity:

Insulin (F49) polyclonal antibody detects endogenous levels of Insulin protein.

### DATA:



Western blot (WB) analysis of Insulin (F49) pAb at 1:500 dilution

Lane1: The Uterus tissue lysate of Rat(40ug)

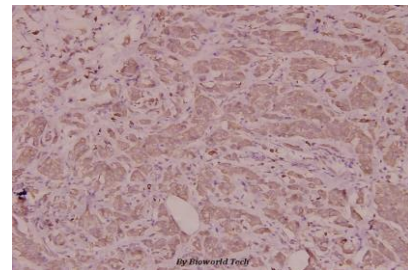
Lane2: MCF-7 whole cell lysate(40ug)

Lane3: PC3 whole cell lysate(40ug)

Lane4: Panc1 whole cell lysate(40ug)

Lane5: The Pancreas tissue lysate of Mouse(20ug)

Lane6: The Pancreas tissue lysate of Rat(20ug)



Immunohistochemistry (IHC) analyzes of Insulin (F49) pAb in paraffin-embedded human breast carcinoma tissue at 1:100.

### Note:

For research use only, not for use in diagnostic procedure.

### Bioworld Technology, Inc.

Add: 1660 South Highway 100, Suite 500 St. Louis Park, MN 55416, USA.

Email: [info@bioworld.com](mailto:info@bioworld.com)

Tel: 6123263284

Fax: 6122933841

### Bioworld technology, co. Ltd.

Add: No 9, weidi road Qixia District Nanjing, 210046, P. R. China.

Email: [info@biogot.com](mailto:info@biogot.com)

Tel: 0086-025-68037686

Fax: 0086-025-68035151