

SOCS-1 (V98) polyclonal antibody

Catalog: BS3509

Host: Rabbit

Reactivity: Human, Mouse, Rat

BackGround:

The suppressor of cytokine signaling (SOCS) family members are negative regulators of cytokine signal transduction that inhibit the Jak/Stat pathway. The SOCS family consists of at least 8 members including the originally identified cytokine-inducible SH2-containing protein (CIS1), as well as SOCS1-7. Each SOCS family member contains a central SH2 domain and a conserved carboxy-terminal motif designated as the SOCS box. These proteins are important regulators of cytokine signaling, proliferation, differentiation, and immune responses.

SOCS1 (suppressor of cytokine signaling 1), also known as JAB (Janus Kinase binding protein), SSI-1 (Stat-induced Stat inhibitor-1), and TIP3 (Tec-interacting protein 3), is a cytokine-regulated SOCS family member that directly inhibits Jak family members through interaction within their kinase activation loop. In addition to inhibiting Jak/Stat signaling, SOCS1 can also negatively regulate Toll-like receptors that contribute to innate immunity. The SOCS box of SOCS1 can trigger ubiquitin-mediated degradation of proteins within and outside of the Jak/Stat pathway. The highest expression of SOCS1 is seen in the thymus and spleen and it plays a critical role in T cell activation and lymphocyte differentiation. SOCS1 also functions as a tumor suppressor protein by inhibiting hematopoietic oncogenes.

Product:

Rabbit IgG, 1mg/ml in PBS with 0.02% sodium azide, 50% glycerol, pH7.2

Molecular Weight:

~ 23 kDa

Swiss-Prot:

O15524

Purification&Purity:

The antibody was affinity-purified from rabbit antiserum by affinity-chromatography using epitope-specific immunogen and the purity is > 95% (by SDS-PAGE).

Applications:

WB: 1:500~1:1000

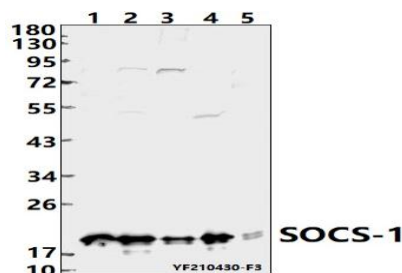
Storage&Stability:

Store at 4 °C short term. Aliquot and store at -20 °C long term. Avoid freeze-thaw cycles.

Specificity:

SOCS-1 (V98) polyclonal antibody detects endogenous levels of SOCS-1 protein.

DATA:



Western blot (WB) analysis of SOCS-1 (V98) polyclonal antibody at 1:500 dilution

Lane1:HepG2 whole cell lysate(40ug)

Lane2:SHSY5Y whole cell lysate(40ug)

Lane3:CT-26 whole cell lysate(40ug)

Lane4:PC12 whole cell lysate(40ug)

Lane5:The Thymus tissue lysate of Rat(40ug)

Note:

For research use only, not for use in diagnostic procedure.

Bioworld Technology, Inc.

Add: 1660 South Highway 100, Suite 500 St. Louis Park, MN 55416, USA.

Email: info@bioworld.com

Tel: 6123263284

Fax: 6122933841

Bioworld technology, co. Ltd.

Add: No 9, weidi road Qixia District Nanjing, 210046, P. R. China.

Email: info@biogot.com

Tel: 0086-025-68037686

Fax: 0086-025-68035151