

PAX8 polyclonal antibody

Catalog: BS3459

Host: Rabbit

Reactivity: Human,Rat,Mouse

Background:

Paired box (PAX) proteins are a family of transcription factors that play important and diverse roles in animal development. Nine PAX proteins (PAX1-9) have been described in humans and other mammals. They are defined by the presence of an amino-terminal "paired" domain, consisting of two helix-turn-helix motifs, with DNA binding activity. PAX proteins are classified into four structurally distinct subgroups (I-IV) based on the absence or presence of a carboxy-terminal homeodomain and a central octapeptide region. Subgroup I (PAX1 and 9) contains the octapeptide but lacks the homeodomain; subgroup II (PAX2, 5, and 8) contains the octapeptide and a truncated homeodomain; subgroup III (PAX3 and 7) contains the octapeptide and a complete homeodomain; and subgroup IV (PAX4 and 6) contains a complete homeodomain but lacks the octapeptide region. PAX proteins play critically important roles in development by regulating transcriptional networks responsible for embryonic patterning and organogenesis; a subset of PAX proteins also maintain functional importance during postnatal development. Research studies have implicated genetic mutations that result in aberrant expression of PAX genes in a number of cancer subtypes, with members of subgroups II and III identified as potential mediators of tumor progression.

PAX8 is involved in the development of thyroid follicular cells and the expression of thyroid-specific genes (5). Investigators have associated mutations in the PAX8 gene with thyroid dysgenesis, thyroid follicular carcinomas, and atypical follicular thyroid adenomas (6,7).

Product:

Rabbit IgG, 1mg/ml in PBS with 0.02% sodium azide, 50% glycerol, pH7.4.

Molecular Weight:

~ 43 kDa

Swiss-Prot:

Q06710

Purification&Purity:

The antibody was affinity-purified from rabbit antiserum by affinity-chromatography using epitope-specific immunogen and the purity is > 95% (by SDS-PAGE).

Applications:

WB: 1:500~1:1000

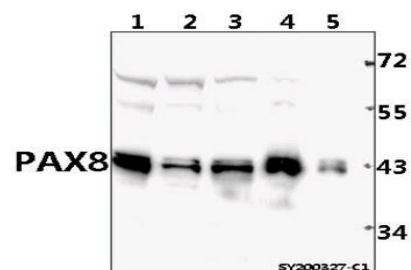
Storage&Stability:

Store at 4 °C short term. Aliquot and store at -20 °C long term. Avoid freeze-thaw cycles.

Specificity:

PAX8 polyclonal antibody detects endogenous levels of PAX8 protein.

DATA:



Western blot (WB) analysis of PAX8 polyclonal antibody at 1:500 dilution

Lane1:A2780 whole cell lysate(40ug)

Lane2:MCF-7 whole cell lysate(40ug)

Lane3:HEK293T whole cell lysate(40ug)

Lane4:HUT78 whole cell lysate(40ug)

Lane5:SK-OVCAR3 whole cell lysate(40ug)

Bioworld Technology, Inc.

Add: 1660 South Highway 100, Suite 500 St. Louis Park, MN 55416, USA.

Email: info@bioworld.com

Tel: 6123263284

Fax: 6122933841

Bioworld technology, co. Ltd.

Add: No 9, weidi road Qixia District Nanjing, 210046, P. R. China.

Email: info@biogot.com

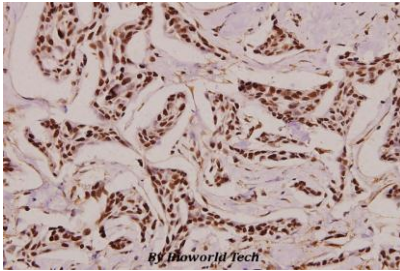
Tel: 0086-025-68037686

Fax: 0086-025-68035151



PRODUCT DATA SHEET

Bioworld Technology, Inc.



Note:

For research use only, not for use in diagnostic procedure.

Bioworld Technology, Inc.

Add: 1660 South Highway 100, Suite 500 St. Louis Park,
MN 55416, USA.

Email: info@bioworld.com

Tel: 6123263284

Fax: 6122933841

Bioworld technology, co. Ltd.

Add: No 9, weidi road Qixia District Nanjing, 210046,
P. R. China.

Email: info@biogot.com

Tel: 0086-025-68037686

Fax: 0086-025-68035151