

GCS- β -2 (V102) polyclonal antibody

Catalog: BS3445

Host: Rabbit

Reactivity: Human, Mouse, Rat

Background:

Guanylate cyclases belong to the adenylyl cyclase class-4/guanylyl cyclase family. There are two forms of guanylate cyclase. The soluble form, known as GCS or sGC, act as receptors for nitric oxide. The membrane-bound receptor form, known as GC, are peptide hormone receptors. GCS is a cGMP-synthesizing enzyme, which is the major receptor for the neurotransmitter nitric oxide (NO). It plays a crucial role in smooth muscle contractility, platelet reactivity and neurotransmission. GCS is a heme containing heterodimer, consisting of one 72 kDa alpha subunit and one 65 kDa beta subunit. The heme moiety mediates NO activation, and this heme group also binds carbon monoxide, which weakly stimulates the enzyme.

Product:

Rabbit IgG, 1mg/ml in PBS with 0.02% sodium azide, 50% glycerol, pH7.2

Molecular Weight:

~ 70 kDa

Swiss-Prot:

O75343

Purification&Purity:

The antibody was affinity-purified from rabbit antiserum by affinity-chromatography using epitope-specific im-

munogen and the purity is > 95% (by SDS-PAGE).

Applications:

IHC: 1:50~1:200

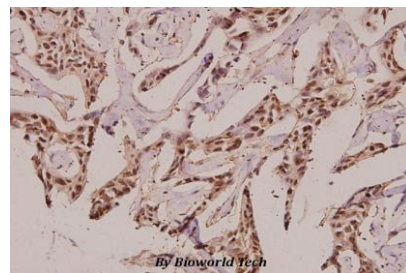
Storage&Stability:

Store at 4 °C short term. Aliquot and store at -20 °C long term. Avoid freeze-thaw cycles.

Specificity:

GCS- β -2 (V102) polyclonal antibody detects endogenous levels of GCS- β -2 protein.

DATA:



Immunohistochemistry (IHC) analyzes of GCS- β -2 (V102) pAb in paraffin-embedded human breast carcinoma tissue at 1:100.

Note:

For research use only, not for use in diagnostic procedure.

Bioworld Technology, Inc.

Add: 1660 South Highway 100, Suite 500 St. Louis Park, MN 55416, USA.

Email: info@bioworld.com

Tel: 6123263284

Fax: 6122933841

Bioworld technology, co. Ltd.

Add: No 9, weidi road Qixia District Nanjing, 210046, P. R. China.

Email: info@biogot.com

Tel: 0086-025-68037686

Fax: 0086-025-68035151