

## Annexin I (N146) polyclonal antibody

Catalog: BS3438

Host: Rabbit

Reactivity: Human, Mouse, Rat

### BackGround:

The annexin family of calcium-binding proteins is composed of at least ten mammalian genes and is characterized by a conserved core domain which binds phospholipids in a Ca<sup>2+</sup>-dependent manner and a unique amino terminal region which may confer binding specificity. The interaction between these proteins and biological membranes have led to the hypothesis that they are involved in cellular trafficking processes such as endocytosis, exocytosis and cellular adhesion. Annexin I, alternatively referred to as lipocortin, has been implicated as a mediator of the anti-inflammatory response produced by glucocorticoids and as an inhibitor of cPLA<sub>2</sub>, a potent mediator of inflammation. Annexin II, also called p36, has been shown to exist as a monomer or a heterotetramer, complexed with the S-100-related protein p11. This complex is termed calpactin I. In the tetrameric form, Annexin II is an efficient substrate of the PKC family and Src pp60.

### Product:

Rabbit IgG, 1mg/ml in PBS with 0.02% sodium azide, 50% glycerol, pH7.2

### Molecular Weight:

~ 39 kDa

### Swiss-Prot:

P04083

### Purification&Purity:

The antibody was affinity-purified from rabbit antiserum by affinity-chromatography using epitope-specific immunogen and the purity is > 95% (by SDS-PAGE).

### Applications:

IHC: 1:50~1:200

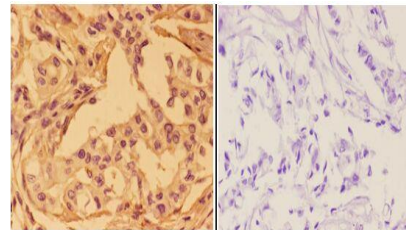
### Storage&Stability:

Store at 4 °C short term. Aliquot and store at -20 °C long term. Avoid freeze-thaw cycles.

### Specificity:

Annexin I (N146) polyclonal antibody detects endogenous levels of Annexin I protein.

### DATA:



BS3438  
Lot: CJ36131

Immunohistochemistry (IHC) analyzes of Annexin I (N146) pAb in paraffin-embedded human breast carcinoma tissue at 1:50, showing membrane and cytoplasmic staining. Negative control (the right) Using PBS instead of primary antibody, secondary antibody is Goat Anti-Rabbit IgG-biotin followed by avidin-peroxidase.

### Note:

For research use only, not for use in diagnostic procedure.

### Bioworld Technology, Inc.

Add: 1660 South Highway 100, Suite 500 St. Louis Park, MN 55416, USA.

Email: [info@bioworld.com](mailto:info@bioworld.com)

Tel: 6123263284

Fax: 6122933841

### Bioworld technology, co. Ltd.

Add: No 9, weidi road Qixia District Nanjing, 210046, P. R. China.

Email: [info@biogot.com](mailto:info@biogot.com)

Tel: 0086-025-68037686

Fax: 0086-025-68035151