

MRP-S21 (Q85) polyclonal antibody

Catalog: BS3324

Host: Rabbit

Reactivity: Human, Mouse, Rat

BackGround:

Mitochondrial ribosomes consist of a large 39S subunit and a small 28S subunit, both of which are comprised of multiple mitochondrial ribosomal proteins (MRPs) that are encoded by nuclear genes and are essential for protein synthesis within mitochondria. MRP-S21 (mitochondrial ribosomal protein S21), also known as RPMS21, is an 87 amino acid protein that localizes to the mitochondrion, where it exists as a component of the 28S ribosomal subunit and works in conjunction with other MRPs to mediate protein synthesis. The gene encoding MRP-S21 maps to human chromosome 1, which spans about 260 million base pairs and comprises nearly 8% of the human genome.

Product:

Rabbit IgG, 1mg/ml in PBS with 0.02% sodium azide, 50% glycerol, pH7.2

Molecular Weight:

~ 11 kDa

Swiss-Prot:

P82921

Purification&Purity:

The antibody was affinity-purified from rabbit antiserum by affinity-chromatography using epitope-specific immunogen and the purity is > 95% (by SDS-PAGE).

Applications:

IHC: 1:50~1:200

IF: 1:50~1:200

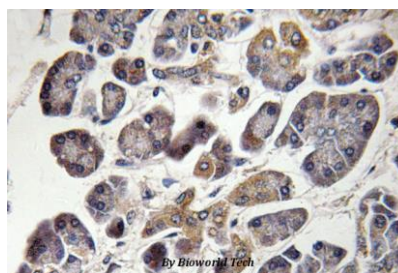
Storage&Stability:

Store at 4 °C short term. Aliquot and store at -20 °C long term. Avoid freeze-thaw cycles.

Specificity:

MRP-S21 (Q85) polyclonal antibody detects endogenous levels of MRP-S21 protein.

DATA:



Immunohistochemistry (IHC) analyzes of MRP-S21 (Q85) pAb in paraffin-embedded human pancreas tissue.

Note:

For research use only, not for use in diagnostic procedure.

Bioworld Technology, Inc.

Add: 1660 South Highway 100, Suite 500 St. Louis Park, MN 55416, USA.

Email: info@bioworld.com

Tel: 6123263284

Fax: 6122933841

Bioworld technology, co. Ltd.

Add: No 9, weidi road Qixia District Nanjing, 210046, P. R. China.

Email: info@biogot.com

Tel: 0086-025-68037686

Fax: 0086-025-68035151