

ApoL2 (R229) polyclonal antibody

Catalog: BS3073

Host: Rabbit

Reactivity: Human, Mouse, Rat

BackGround:

Apolipoproteins are protein components of plasma lipoproteins. The apolipoprotein L gene family encodes six highly homologous proteins designated apoL 1-6, which are associated with large high density type lipoproteins (HDL). The human apoL family maps to chromosome 22q12.3 within a 127,000-bp region. ApoL2 and apoL3 may allow the binding of lipids to organ-elles or may be involved in the movement of lipids in the cytoplasm. ApoL2 localizes to the cytoplasm and is widely expressed, with the highest levels observed in the lung, thymus, pancreas, placenta, adult brain and prostate. The apoL2 protein is also detected in the spleen, liver, kidney, colon, small intestine, uterus, spinal cord, adrenal gland, salivary gland, trachea, mammary gland, skeletal muscle, testis and fetal brain and liver. ApoL3 also localizes to the cytoplasm and is widely expressed, with highest levels detected in the prostate, lung and placenta. It is also detected in kidney, bone marrow, spleen, thymus, spinal cord, adrenal gland, salivary gland, trachea and mammary gland. Lower levels of apoL3 are observed in the brain, heart, fetal liver, pancreas and testis.

Product:

Rabbit IgG, 1mg/ml in PBS with 0.02% sodium azide, 50% glycerol, pH7.2

Molecular Weight:

~ 37 kDa

Swiss-Prot:

Q9BQE5

Purification&Purity:

The antibody was affinity-purified from rabbit antiserum by affinity-chromatography using epitope-specific immunogen and the purity is > 95% (by SDS-PAGE).

Applications:

WB: 1:500~1:1000

IHC: 1:50~1:200

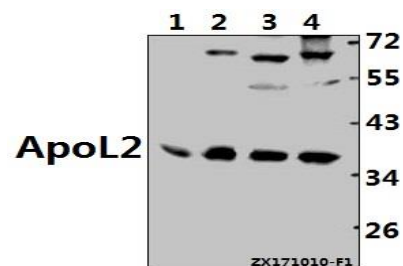
Storage&Stability:

Store at 4 °C short term. Aliquot and store at -20 °C long term. Avoid freeze-thaw cycles.

Specificity:

ApoL2 (R229) polyclonal antibody detects endogenous levels of ApoL2 protein.

DATA:



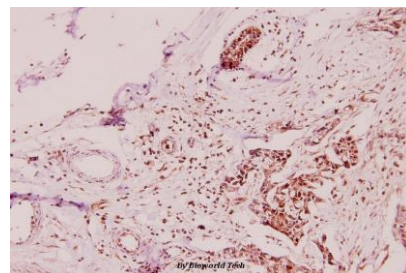
Western blot (WB) analysis of ApoL2 (R229) pAb at 1:500 dilution

Lane1:The Brain tissue lysate of Mouse(40ug)

Lane2:The Brain tissue lysate of Rat(40ug)

Lane3:PC3 whole cell lysate(40ug)

Lane4:Hela whole cell lysate(40ug)



Immunohistochemistry (IHC) analyzes of ApoL2 (R229) pAb in paraffin-embedded human breast carcinoma tissue at 1:100.

Note:

For research use only, not for use in diagnostic procedure.

Bioworld Technology, Inc.

Add: 1660 South Highway 100, Suite 500 St. Louis Park, MN 55416, USA.

Email: info@bioworld.com

Tel: 6123263284

Fax: 6122933841

Bioworld technology, co. Ltd.

Add: No 9, weidi road Qixia District Nanjing, 210046, P. R. China.

Email: info@biogot.com

Tel: 0086-025-68037686

Fax: 0086-025-68035151



PRODUCT DATA SHEET

Bioworld Technology, Inc.

Bioworld Technology, Inc.

Add: 1660 South Highway 100, Suite 500 St. Louis Park,
MN 55416, USA.

Email: info@bioworld.com

Tel: 6123263284

Fax: 6122933841

Bioworld technology, co. Ltd.

Add: No 9, weidi road Qixia District Nanjing, 210046,
P. R. China.

Email: info@biogot.com

Tel: 0086-025-68037686

Fax: 0086-025-68035151