

## ICAM-1 (Q506) polyclonal antibody

Catalog: BS2980

Host: Rabbit

Reactivity: Human, Mouse, Rat

### Background:

ICAM1 is a 85-110 kDa single chain type 1 integral membrane glycoprotein with an extracellular domain of five immunoglobulin superfamily repeats, a transmembrane region and a cytoplasmic domain. It shares considerable amino acid sequence homology with ICAM3 and with ICAM2. ICAM1 is expressed by activated endothelial cells. It is detected on cells of many other lineages (e.g. epithelial cells, fibroblasts, chondrocytes, B lymphocytes, T lymphocytes (low), monocytes, macrophages, dendritic cells and neutrophils, with lower levels that increase in inflammation. Also, ICAM1 is detected in some carcinoma and melanoma cells. Soluble ICAM1 is detectable in the plasma and is elevated in patients with various inflammatory syndromes. It is the receptor for rhinoviruses and malaria.

### Product:

Rabbit IgG, 1mg/ml in PBS with 0.02% sodium azide, 50% glycerol, pH7.2

### Molecular Weight:

~ 89, 92 kDa

### Swiss-Prot:

P05362

### Purification&Purity:

The antibody was affinity-purified from rabbit antiserum by affinity-chromatography using epitope-specific immunogen and the purity is > 95% (by SDS-PAGE).

### Applications:

WB: 1:500~1:1000

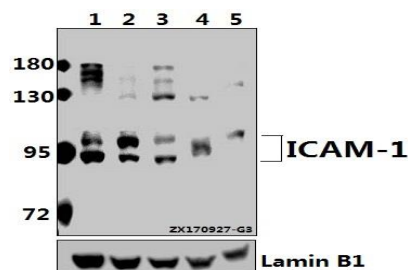
### Storage&Stability:

Store at 4 °C short term. Aliquot and store at -20 °C long term. Avoid freeze-thaw cycles.

### Specificity:

ICAM-1 (Q506) polyclonal antibody detects endogenous levels of ICAM-1 protein.

### DATA:



Western blot (WB) analysis of ICAM-1 (Q506) pAb at 1:500 dilution

Lane1:HEK293T whole cell lysate(20ug)

Lane2:A549 whole cell lysate(40ug)

Lane3:H1792 whole cell lysate(40ug)

Lane4:C6 whole cell lysate(40ug)

Lane5:SP2/0 whole cell lysate(40ug)

### Note:

For research use only, not for use in diagnostic procedure.

### Bioworld Technology, Inc.

Add: 1660 South Highway 100, Suite 500 St. Louis Park, MN 55416, USA.

Email: [info@bioworld.com](mailto:info@bioworld.com)

Tel: 6123263284

Fax: 6122933841

### Bioworld technology, co. Ltd.

Add: No 9, weidi road Qixia District Nanjing, 210046, P. R. China.

Email: [info@biogot.com](mailto:info@biogot.com)

Tel: 0086-025-68037686

Fax: 0086-025-68035151