

## CXCR7 (A356) polyclonal antibody

Catalog: BS2694

Host: Rabbit

Reactivity: Human, Mouse

### BackGround:

Members of the C-X-C or  $\alpha$  chemokine family are characterized by a pair of cysteine residues separated by a single amino acid and primarily function as chemoattractants for neutrophils. The C-X-C family includes IL-8, NAP-2, MSGA and stromal cell derived factor-1 (SDF-1). Receptors for the C-X-C family are G protein-coupled, seven pass transmembrane domain proteins and include proteins such as IL-8RA, IL-8RB, CXCR-3 and fusin (also designated LESTR or CXCR-4). C-X-C chemokine receptor type 7 (CXCR-7), also known as RDC-1, is a 362 amino acid receptor for SDF-1. Initially identified as a receptor for vasoactive intestinal peptide (VIP), it is now considered to be an orphan receptor. CXCR-7, with CSCR-4, also acts as a co receptor for human immunodeficiency viruses (HIV). Highly expressed in monocytes, B cells and basophils, and highly active in various biological processes, including cell growth, cell adhesion and tumor growth, CXCR-7 may play a role in tumorigenesis.

### Product:

Rabbit IgG, 1mg/ml in PBS with 0.02% sodium azide, 50% glycerol, pH7.2

### Molecular Weight:

~ 41 kDa

### Swiss-Prot:

P25106

### Purification&Purity:

The antibody was affinity-purified from rabbit antiserum by affinity-chromatography using epitope-specific immunogen and the purity is > 95% (by SDS-PAGE).

### Applications:

WB: 1:500~1:1000

IHC: 1:50~1:200

IF: 1:50~1:200

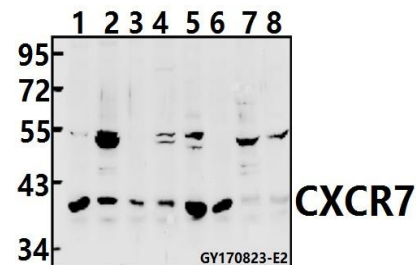
### Storage&Stability:

Store at 4 °C short term. Aliquot and store at -20 °C long term. Avoid freeze-thaw cycles.

### Specificity:

CXCR7 (A356) polyclonal antibody detects endogenous levels of CXCR7 protein.

### DATA:



Western blot (WB) analysis of CXCR7 (A356) pAb at 1:500 dilution

Lane1:HEK293T whole cell lysate(40ug)

Lane2:Panc1 whole cell lysate(40ug)

Lane3:COS-7 whole cell lysate(40ug)

Lane4:U-87MG whole cell lysate(40ug)

Lane5:K562 whole cell lysate(40ug)

Lane6:BV2 whole cell lysate(40ug)

Lane7:PC12 whole cell lysate(40ug)

Lane8:CT26 whole cell lysate(40ug)

### Note:

For research use only, not for use in diagnostic procedure.

### Bioworld Technology, Inc.

Add: 1660 South Highway 100, Suite 500 St. Louis Park, MN 55416, USA.

Email: [info@bioworld.com](mailto:info@bioworld.com)

Tel: 6123263284

Fax: 6122933841

### Bioworld technology, co. Ltd.

Add: No 9, weidi road Qixia District Nanjing, 210046, P. R. China.

Email: [info@biogot.com](mailto:info@biogot.com)

Tel: 0086-025-68037686

Fax: 0086-025-68035151