

Spindlin-1 (H139) polyclonal antibody

Catalog: BS2678

Host: Rabbit

Reactivity: Human, Mouse, Rat

Background:

SPIN1 (spindlin 1), also known as SPIN or ovarian cancer-related protein (OCR), is a 262 amino acid nuclear protein suggested to play a role in regulation of the cell-cycle during the transition from gamete to embryo. A member of the SPIN/STSY family, SPIN1 localizes to interphase nucleus and mitotic chromosomes, and is modified by phosphorylation in a cell-cycle-dependent fashion. A meiotic spindle-binding protein, SPIN1 overexpression has been shown to cause defects in mitotic spindles, thereby resulting in chromosome instability and potential tumorigenesis.

Product:

Rabbit IgG, 1mg/ml in PBS with 0.02% sodium azide, 50% glycerol, pH7.2

Molecular Weight:

~ 30 kDa

Swiss-Prot:

Q9Y657

Purification&Purity:

The antibody was affinity-purified from rabbit antiserum by affinity-chromatography using epitope-specific immunogen and the purity is > 95% (by SDS-PAGE).

Applications:

WB: 1:500~1:1000

IHC: 1:50~1:200

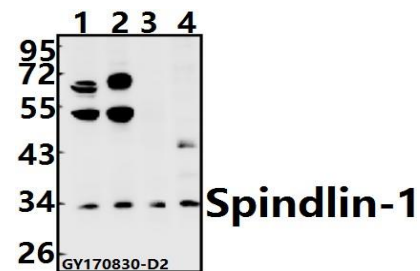
Storage&Stability:

Store at 4 °C short term. Aliquot and store at -20 °C long term. Avoid freeze-thaw cycles.

Specificity:

Spindlin-1 (H139) polyclonal antibody detects endogenous levels of Spindlin-1 protein.

DATA:



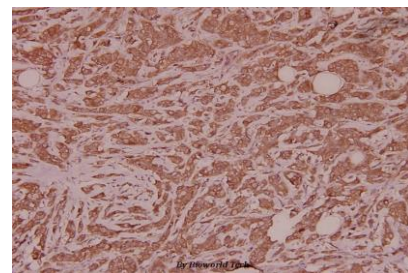
Western blot (WB) analysis of Spindlin-1 (H139) pAb at 1:500 dilution

Lane1:SK-OVCAR3 whole cell lysate(40ug)

Lane2:SGC7901 whole cell lysate(40ug)

Lane3:The Ovarian tissue lysate of Rat(40ug)

Lane4:The Testis tissue lysate of Mouse(40ug)



Immunohistochemistry (IHC) analyzes of Spindlin-1 (H139) pAb in paraffin-embedded human breast carcinoma tissue at 1:100.

Note:

For research use only, not for use in diagnostic procedure.

Bioworld Technology, Inc.

Add: 1660 South Highway 100, Suite 500 St. Louis Park, MN 55416, USA.

Email: info@bioworld.com

Tel: 6123263284

Fax: 6122933841

Bioworld technology, co. Ltd.

Add: No 9, weidi road Qixia District Nanjing, 210046, P. R. China.

Email: info@biogot.com

Tel: 0086-025-68037686

Fax: 0086-025-68035151