

ErbB2/HER2 (K676) polyclonal antibody

Catalog: BS2463

Host: Rabbit

Reactivity: Human, Mouse, Rat

Background:

The EGF receptor family comprises several related receptor tyrosine kinases that are frequently overexpressed in a variety of carcinomas. Members of this receptor family include EGFR (HER1), Neu (ErbB-2, HER2), ErbB-3 (HER3), and ErbB-4 (HER4), which form either homodimers or heterodimers upon ligand binding. Neu, a glycoprotein, undergoes transactivation upon hetero-dimerization with other EGF receptor family members. Neu heterodimerization with ErbB-3 recruits hergulin, which induces phosphoinositide (PI) 3-kinase activation. Activation of Neu potentiates tumor cell motility and protease secretion and invasion, and also modulates cell cycle checkpoint function, DNA repair and apoptotic responses.

Product:

Rabbit IgG, 1mg/ml in PBS with 0.02% sodium azide, 50% glycerol, pH7.2

Molecular Weight:

~ 138,185 kDa

Swiss-Prot:

P04626

Purification&Purity:

The antibody was affinity-purified from rabbit antiserum by affinity-chromatography using epitope-specific immunogen and the purity is > 95% (by SDS-PAGE).

Applications:

WB: 1:500~1:1000

IHC: 1:50~1:200

IF: 1:50~1:200

Storage&Stability:

Store at 4 °C short term. Aliquot and store at -20 °C long term. Avoid freeze-thaw cycles.

Specificity:

ErbB2/HER2 (K676) polyclonal antibody detects endogenous levels of ErbB2/HER2 protein.

DATA:



Western blot (WB) analysis of ErbB2/HER2 (K676) pAb at 1:500 dilution

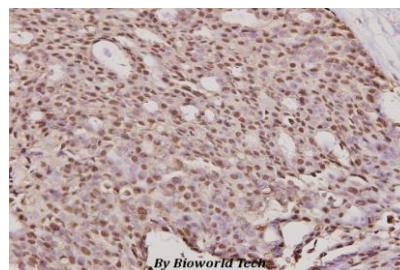
Lane1:3T3-L1 whole cell lysate(40ug)

Lane2:Beas-2B whole cell lysate(40ug)

Lane3:MCF-7 whole cell lysate(40ug)

Lane4:A375 whole cell lysate(40ug)

Lane5:H9C2 whole cell lysate(20ug)



Immunohistochemistry (IHC) analyzes of ErbB2/HER2 (K676) pAb in paraffin-embedded human breast carcinoma tissue at 1:100.

Note:

For research use only, not for use in diagnostic procedure.

Bioworld Technology, Inc.

Add: 1660 South Highway 100, Suite 500 St. Louis Park, MN 55416, USA.

Email: info@bioworld.com

Tel: 6123263284

Fax: 6122933841

Bioworld technology, co. Ltd.

Add: No 9, weidi road Qixia District Nanjing, 210046, P. R. China.

Email: info@biogot.com

Tel: 0086-025-68037686

Fax: 0086-025-68035151