

Casein Kinase I γ 1 (H3) polyclonal antibody

Catalog: BS2366

Host: Rabbit

Reactivity: Human, Mouse, Rat

Background:

Casein kinase I (also designated CKI) and casein kinase II (also designated CKII) compose a family of serine/ threonine protein kinases which are present in all eukaryotes examined to date. CKI family members, which include CKI α , γ , ϵ and δ , have been implicated in the control of cytoplasmic and nuclear processes, including DNA replication and repair. CKII is usually expressed as a tetrameric complex consisting of either an α 2 β 2 or an α ' β 2 structure. The α catalytic subunit is stimulated by the β regulatory subunit, which undergoes autophosphorylation. CKII activity is high in the cytosol and nucleus of proliferating and differentiating cells. CKII is known to phosphorylate more than 100 different substrates including nuclear oncoproteins, transcription factors and enzymes involved in DNA metabolism.

Product:

Rabbit IgG, 1mg/ml in PBS with 0.02% sodium azide, 50% glycerol, pH7.2

Molecular Weight:

~ 43-60 kDa

Swiss-Prot:

Q9HCP0

Purification&Purity:

The antibody was affinity-purified from rabbit antiserum by affinity-chromatography using epitope-specific immunogen and the purity is > 95% (by SDS-PAGE).

Applications:

WB: 1:500~1:1000

IHC: 1:50~1:200

IF: 1:50~1:200

Storage&Stability:

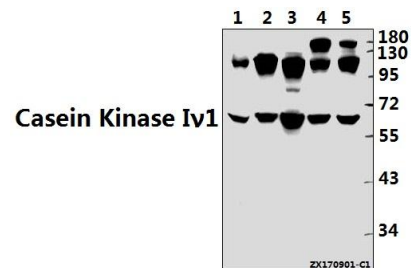
Store at 4 °C short term. Aliquot and store at -20 °C long term. Avoid freeze-thaw cycles.

Specificity:

Casein Kinase I γ 1 (H3) polyclonal antibody detects en-

dogenous levels of Casein Kinase I γ 1 protein.

DATA:



Western blot (WB) analysis of Casein Kinase I γ 1 (H3) pAb at 1:500 dilution

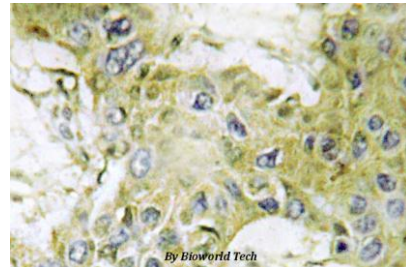
Lane1:3T3-L1 whole cell lysate(40ug)

Lane2:C6 whole cell lysate(40ug)

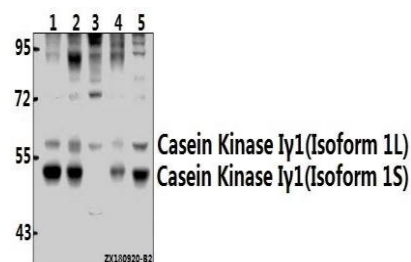
Lane3:HEK293T whole cell lysate(40ug)

Lane4:MCF-7 whole cell lysate(40ug)

Lane5:A549 whole cell lysate(40ug)



Immunohistochemistry (IHC) analyzes of Casein Kinase I γ 1 (H3) pAb in paraffin-embedded human brain tissue.



Western blot (WB) analysis of Casein Kinase I γ 1 (H3) pAb at 1:500 dilution

Lane1:MCF-7 whole cell lysate(40ug)

Lane2:A549 whole cell lysate(40ug)

Bioworld Technology, Inc.

Add: 1660 South Highway 100, Suite 500 St. Louis Park, MN 55416, USA.

Email: info@bioworld.com

Tel: 6123263284

Fax: 6122933841

Bioworld technology, co. Ltd.

Add: No 9, weidi road Qixia District Nanjing, 210046, P. R. China.

Email: info@biogot.com

Tel: 0086-025-68037686

Fax: 0086-025-68035151



PRODUCT DATA SHEET

Bioworld Technology, Inc.

Lane3:Hela whole cell lysate(40ug)

Lane4:EC9706 whole cell lysate(40ug)

Lane5:A2780 whole cell lysate(40ug)

Note:

For research use only, not for use in diagnostic procedure.

Bioworld Technology, Inc.

Add: 1660 South Highway 100, Suite 500 St. Louis Park,
MN 55416, USA.

Email: info@bioworld.com

Tel: 6123263284

Fax: 6122933841

Bioworld technology, co. Ltd.

Add: No 9, weidi road Qixia District Nanjing, 210046,
P. R. China.

Email: info@biogot.com

Tel: 0086-025-68037686

Fax: 0086-025-68035151