

Siah-1/2 (Q210) polyclonal antibody

Catalog: BS2327

Host: Rabbit

Reactivity: Human, Mouse, Rat

Background:

SIAH, the human homologue of the Drosophila seven in absentia (sina) gene, is a tumor suppressor protein that is expressed in intestinal epithelium and activated during apoptosis. Human SIAH proteins are produced as two distinct gene products, SIAH-1, and a slightly larger protein SIAH-2, which share a highly conserved C-terminal sequence and differ in their N-terminal regions. SIAH-1 is a 32 kDa protein that contains an N-terminal RING-finger domain, which is required for proteolysis, and a cystein-rich C-terminal domain, which regulates oligomerization and SIAH binding to target proteins. As a tumor suppressor, SIAH-1 binds DCC (deleted in colorectal cancer) and regulates DCC degradation via the ubiquitin-proteasome pathway. SIAH-1 also binds a Bcl-2 related protein, Bag-1, thereby inhibiting cell growth. The majority of SIAH-1 is localized to the nucleus, however a small percentage is detected in the cytoplasm. This nuclear localization suggests that SIAH proteins may interact with other nuclear matrix proteins and DNA.

Product:

1 mg/ml in Phosphate buffered saline (PBS) with 15 mM sodium azide, approx. pH 7.2.

Molecular Weight:

~40 kDa

Swiss-Prot:

Q8IUQ4/O43255

Purification&Purity:

The antibody was affinity-purified from rabbit antiserum by affinity-chromatography using epitope-specific immunogen and the purity is > 95% (by SDS-PAGE).

Applications:

WB: 1:500~1:1000

IHC: 1:50~1:200

IF: 1:50~1:200

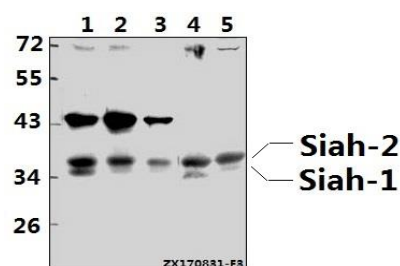
Storage&Stability:

Store at 4 °C short term. Aliquot and store at -20 °C long term. Avoid freeze-thaw cycles.

Specificity:

Siah-1/2 (Q210) polyclonal antibody detects endogenous levels of Siah-1/2 protein.

DATA:



Western blot (WB) analysis of Siah-1/2 (Q210) pAb at 1:500 dilution

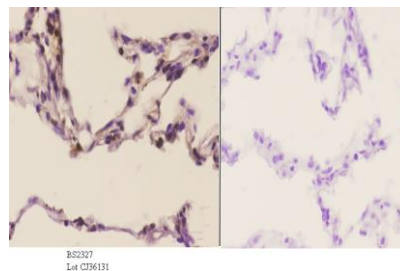
Lane1:HepG2 whole cell lysate(40ug)

Lane2:PC3 whole cell lysate(40ug)

Lane3:U-87MG whole cell lysate(40ug)

Lane4:C6 whole cell lysate(40ug)

Lane5:CT26 whole cell lysate(40ug)



Immunohistochemistry (IHC) analyzes of Siah-1/2 (Q210) pAb in paraffin-embedded human lung carcinoma tissue at 1:50. showing cytoplasmic and nucleus staining. Negative control (the right) Using PBS instead of primary antibody, secondary antibody is Goat Anti-Rabbit IgG-biotin followed by avidin-peroxidase.

Bioworld Technology, Inc.

Add: 1660 South Highway 100, Suite 500 St. Louis Park, MN 55416, USA.

Email: info@bioworld.com

Tel: 6123263284

Fax: 6122933841

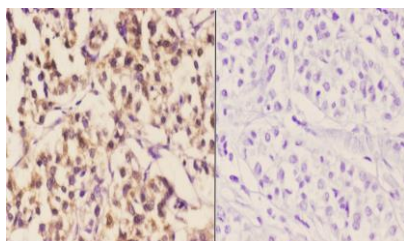
Bioworld technology, co. Ltd.

Add: No 9, weidi road Qixia District Nanjing, 210046, P. R. China.

Email: info@biogot.com

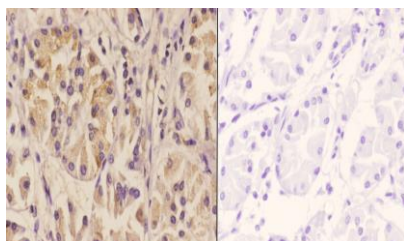
Tel: 0086-025-68037686

Fax: 0086-025-68035151



B52327
Lot C296131

Immunohistochemistry (IHC) analyzes of Siah-1/2 (Q210) pAb in paraffin-embedded human liver carcinoma tissue at 1:50, showing cytoplasmic and nucleus staining. Negative control (the right) Using PBS instead of primary antibody, secondary antibody is Goat Anti-Rabbit IgG-biotin followed by avidin-peroxidase.



B52327
Lot C296131

Immunohistochemistry (IHC) analyzes of Siah-1/2 (Q210) pAb in paraffin-embedded human stomach carcinoma tissue at 1:50, showing cyto-

plasmic and nucleus staining. Negative control (the right) Using PBS instead of primary antibody, secondary antibody is Goat Anti-Rabbit IgG-biotin followed by avidin-peroxidase.

Note:

For research use only, not for use in diagnostic procedure.

Bioworld Technology, Inc.

Add: 1660 South Highway 100, Suite 500 St. Louis Park, MN 55416, USA.

Email: info@bioworld.com

Tel: 6123263284

Fax: 6122933841

Bioworld technology, co. Ltd.

Add: No 9, weidi road Qixia District Nanjing, 210046, P. R. China.

Email: info@biogot.com

Tel: 0086-025-68037686

Fax: 0086-025-68035151