

EKLF (W318) polyclonal antibody

Catalog: BS2303

Host: Rabbit

Reactivity: Human, Mouse, Rat

BackGround:

The Kruppel-type zinc finger transcription factors comprise a conserved family of DNA binding proteins that are important in developmental regulation. The Kruppel zinc finger transcription factor was initially identified in *Drosophila* as a segmentation gene. Kruppel-like factors that have been characterized in mammals include EKLF, LKLF and GKLF. EKLF is expressed principally in erythroid tissues, and LKLF expression is limited to the lung. GKLF is found predominantly in gut and has been shown to be expressed during growth arrest.

Product:

Rabbit IgG, 1mg/ml in PBS with 0.02% sodium azide, 50% glycerol, pH7.2

Molecular Weight:

~ 38 kDa

Swiss-Prot:

Q13351

Purification&Purity:

The antibody was affinity-purified from rabbit antiserum by affinity-chromatography using epitope-specific immunogen and the purity is > 95% (by SDS-PAGE).

Applications:

WB: 1:500~1:1000

IHC: 1:50~1:200

IF: 1:50~1:200

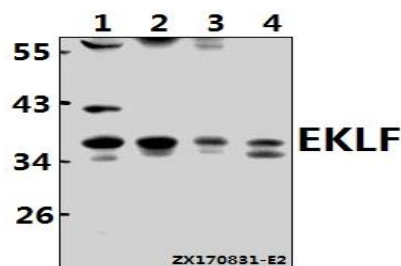
Storage&Stability:

Store at 4 °C short term. Aliquot and store at -20 °C long term. Avoid freeze-thaw cycles.

Specificity:

EKLF (W318) polyclonal antibody detects endogenous levels of EKLF protein. This antibody also recognizes IKLF (51 kDa), GKLF (56 kDa), and UKLF (33 kDa).

DATA:



Western blot (WB) analysis of EKLF (W318) pAb at 1:500 dilution

Lane1:C6 whole cell lysate(40ug)

Lane2:SP2/0 whole cell lysate(40ug)

Lane3:MCF-7 whole cell lysate(40ug)

Lane4:K562 whole cell lysate(40ug)

Note:

For research use only, not for use in diagnostic procedure.

Bioworld Technology, Inc.

Add: 1660 South Highway 100, Suite 500 St. Louis Park, MN 55416, USA.

Email: info@bioworld.com

Tel: 6123263284

Fax: 6122933841

Bioworld technology, co. Ltd.

Add: No 9, weidi road Qixia District Nanjing, 210046, P. R. China.

Email: info@biogot.com

Tel: 0086-025-68037686

Fax: 0086-025-68035151