

HGK (R430) polyclonal antibody

Catalog: BS2249

Host: Rabbit

Reactivity: Human, Mouse, Rat

BackGround:

Several mammalian kinases have been identified which exhibit sequence similarity to the *Saccharomyces cerevisiae* serine/threonine kinase STE20. STE20 is involved in relaying signals from G-protein coupled receptors to cytosolic MAP kinase cascades, and it lies upstream of a MAP kinase kinase kinase. Mammalian STE20-like kinases include NIK, KHS, GLK, YSK1, HPK1, Krs-1, Krs-2, and GC kinase. NIK (Nck interacting kinase), like many of the STE20-like kinases, has been shown to activate the SAPK/JNK stress response pathway. Both the kinase domain and the C-terminal regulatory domain of NIK are required for full activation. NIK interacts with MEKK1 and is thought to act upstream of MEKK1 in the SAPK/JNK signaling pathway.

Product:

Rabbit IgG, 1mg/ml in PBS with 0.02% sodium azide, 50% glycerol, pH7.2

Molecular Weight:

~ 142 kDa

Swiss-Prot:

O95819

Purification&Purity:

The antibody was affinity-purified from rabbit antiserum

by affinity-chromatography using epitope-specific immunogen and the purity is > 95% (by SDS-PAGE).

Applications:

IHC: 1:50~1:200

IF: 1:50~1:200

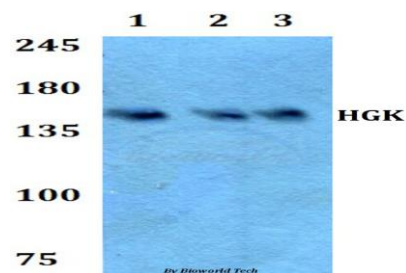
Storage&Stability:

Store at 4 °C short term. Aliquot and store at -20 °C long term. Avoid freeze-thaw cycles.

Specificity:

HGK (R430) polyclonal antibody detects endogenous levels of HGK protein.

DATA:



Note:

For research use only, not for use in diagnostic procedure.

Bioworld Technology, Inc.

Add: 1660 South Highway 100, Suite 500 St. Louis Park, MN 55416, USA.

Email: info@bioworld.com

Tel: 6123263284

Fax: 6122933841

Bioworld technology, co. Ltd.

Add: No 9, weidi road Qixia District Nanjing, 210046, P. R. China.

Email: info@biogot.com

Tel: 0086-025-68037686

Fax: 0086-025-68035151