

AK6 (G35) polyclonal antibody

Catalog: BS2171

Host: Rabbit

Reactivity: Human, Mouse, Rat

BackGround:

TAF9(AK6) functions as a component of the DNA-binding general transcription factor complex TFIID and the regulatory transcription complex SAGA. Binding of TFIID to a promoter (with or without TATA element) is the initial step in pre-initiation complex (PIC) formation. TFIID plays a key role in the regulation of gene expression by RNA polymerase II through different activities such as transcription activator interaction, core promoter recognition and selectivity, TFIIA and TFIIB interaction, chromatin modification (histone acetylation by TAF1), facilitation of DNA opening and initiation of transcription. SAGA influences RNA polymerase II transcriptional activity through different activities such as TBP interaction (SPT3 and SPT8) and promoter selectivity, interaction with transcription activators (GCN5, ADA2, ADA3, and TRA1), and chromatin modification through histone acetylation (GCN5).

Product:

Rabbit IgG, 1mg/ml in PBS with 0.02% sodium azide, 50% glycerol, pH7.2

Molecular Weight:

~ 20 kDa

Swiss-Prot:

Q9Y3D8

Purification&Purity:

The antibody was affinity-purified from rabbit antiserum by affinity-chromatography using epitope-specific immunogen and the purity is > 95% (by SDS-PAGE).

Applications:

WB: 1:500~1:1000

IHC: 1:50~1:200

IP: 1:10~1:100

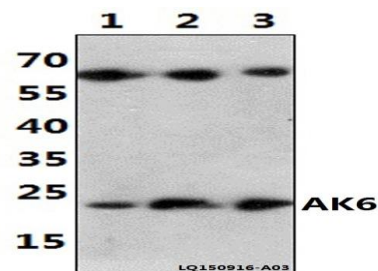
Storage&Stability:

Store at 4 °C short term. Aliquot and store at -20 °C long term. Avoid freeze-thaw cycles.

Specificity:

AK6 (G35) polyclonal antibody detects endogenous levels of AK6 protein.

DATA:

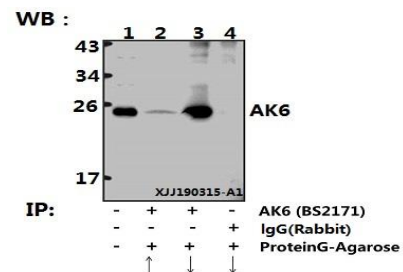


Western blot (WB) analysis of AK6 (G35) polyclonal antibody at 1:1000 dilution

Lane1:A549 whole cell lysate(40ug)

Lane2:The Lung tissue lysate of Rat(30ug)

Lane3:The Lung tissue lysate of Mouse(30ug)



Immunoprecipitation of HEK293T cell lysate using

AK6 (G35) polyclonal antibody (Sepharose Bead Conjugate)

#BD0048(lane 2 and lane 3) and Nonspecific IgG Control (Sepharose

Bead Conjugate) #BD0048 (lane 4).Lane 1 is 30% input.The western

blot was probed using ATP5H (D146) #BS2171. “ ↑ ” (supernatant) ;

“ ↓ ” (deposition)

Note:

For research use only, not for use in diagnostic procedure.

Bioworld Technology, Inc.

Add: 1660 South Highway 100, Suite 500 St. Louis Park, MN 55416, USA.

Email: info@bioworld.com

Tel: 6123263284

Fax: 6122933841

Bioworld technology, co. Ltd.

Add: No 9, weidi road Qixia District Nanjing, 210046, P. R. China.

Email: info@biogot.com

Tel: 0086-025-68037686

Fax: 0086-025-68035151



PRODUCT DATA SHEET

Bioworld Technology, Inc.

Bioworld Technology, Inc.

Add: 1660 South Highway 100, Suite 500 St. Louis Park,
MN 55416, USA.

Email: info@bioworld.com

Tel: 6123263284

Fax: 6122933841

Bioworld technology, co. Ltd.

Add: No 9, weidi road Qixia District Nanjing, 210046,
P. R. China.

Email: info@biogot.com

Tel: 0086-025-68037686

Fax: 0086-025-68035151