

## TCF-1 (F26) polyclonal antibody

Catalog: BS1987

Host: Rabbit

Reactivity: Human, Mouse, Rat

### Background:

T-cell factor-1 (TCF-1) is a DNA-binding transcriptional activator that is essential for lymphoid cell development. The TCF family of transcription factors are activated by the Wnt-1 and Wingless pathways and are characterized by the presence of a conserved protein motif, the high mobility group (HMG) 1 box, which mediates DNA binding. Several alternative splice variants of TCF-1 have been identified, including TCF-1A, which share a conserved amino terminus and differ in the carboxy terminal sequences. The Wnt mediated signaling pathway induces cytosolic  $\beta$ -catenin binding to TCF proteins within the nucleus, leading to the enhanced expression of the Wnt target genes. The  $\beta$ -catenin-TCF complexes are negatively regulated by the adenomatous polyposis coli (APC) tumor suppressor protein, which phosphorylates  $\beta$ -catenin and, in turn, increases the degradation of cytosolic  $\beta$ -catenin and inhibits the transcriptional activity of the TCF proteins.

### Product:

Rabbit IgG, 1mg/ml in PBS with 0.02% sodium azide, 50% glycerol, pH7.2

### Molecular Weight:

~ 42 kDa

### Swiss-Prot:

P36402

### Purification&Purity:

The antibody was affinity-purified from rabbit antiserum by affinity-chromatography using epitope-specific immunogen and the purity is > 95% (by SDS-PAGE).

### Applications:

WB: 1:500~1:1000

IHC: 1:50~1:200

IP: 1:50~1:200

IF: 1:100~1:500

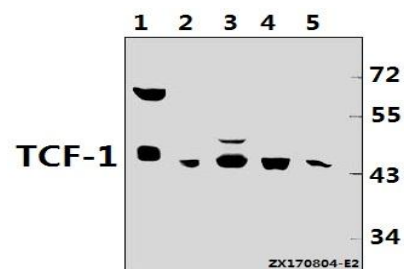
### Storage&Stability:

Store at 4 °C short term. Aliquot and store at -20 °C long term. Avoid freeze-thaw cycles.

### Specificity:

TCF-1 (F26) polyclonal antibody detects endogenous levels of TCF-1 protein.

### DATA:



Western blot (WB) analysis of TCF-1 (F26) pAb at 1:500 dilution

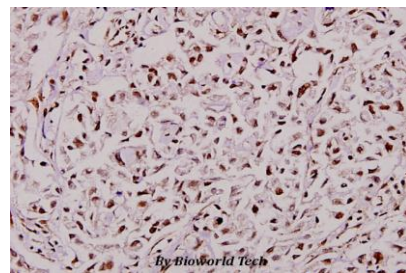
Lane1:K562 whole cell lysate(40ug)

Lane2:A549 whole cell lysate(40ug)

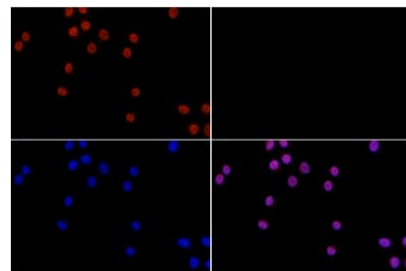
Lane3:U-87MG whole cell lysate(40ug)

Lane4:C6 whole cell lysate(40ug)

Lane5:MEF whole cell lysate(40ug)



Immunohistochemistry (IHC) analyzes of TCF-1 (F26) pAb in paraffin-embedded human breast carcinoma tissue at 1:100.



Immunofluorescence analysis of L02 cells using TCF-1

### Bioworld Technology, Inc.

Add: 1660 South Highway 100, Suite 500 St. Louis Park, MN 55416, USA.

Email: [info@bioworld.com](mailto:info@bioworld.com)

Tel: 6123263284

Fax: 6122933841

### Bioworld technology, co. Ltd.

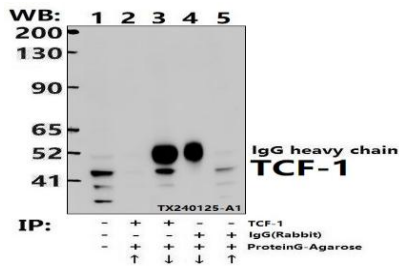
Add: No 9, weidi road Qixia District Nanjing, 210046, P. R. China.

Email: [info@biogot.com](mailto:info@biogot.com)

Tel: 0086-025-68037686

Fax: 0086-025-68035151

(F26) pAb at dilution of 1:200 (40x lens).



Immunoprecipitation of HCT116 cell lysates using TCF-1 pAb (Sepharose Bead Conjugate)#BD0048 (lane 2 and lane 3) and Nonspecific IgG Control (Sepharose Bead Conjugate)#BD0048 (lane 4 and lane

5). Lane 1 is 30% input. The western blot was probed using TCF-1 pAb.

**Note:**

For research use only, not for use in diagnostic procedure.

**Bioworld Technology, Inc.**

Add: 1660 South Highway 100, Suite 500 St. Louis Park, MN 55416, USA.

Email: [info@bioworld.com](mailto:info@bioworld.com)

Tel: 6123263284

Fax: 6122933841

**Bioworld technology, co. Ltd.**

Add: No 9, weidi road Qixia District Nanjing, 210046, P. R. China.

Email: [info@biogot.com](mailto:info@biogot.com)

Tel: 0086-025-68037686

Fax: 0086-025-68035151