

## Ptx3 (Y27) polyclonal antibody

Catalog: BS1965

Host: Rabbit

Reactivity: Human, Mouse, Rat

### BackGround:

Pentraxins are a protein superfamily that is characterized by a cyclic multimeric structure. Ptx3, also known as tumor necrosis factor-stimulated gene sequence-14 (TSG14), is a secreted pattern-recognition receptor that has a non-redundant role in resistance to selected microbial agents. Ptx3 belongs to the family of “long pentraxins”, which have C-terminal pentraxin domains and novel amino-terminal domains. Ptx3 binds selected pathogens, including *Aspergillus fumigatus*, *Pseudomonas aeruginosa* and *Salmonella typhimurium*. It is synthesized in IgA glomerulonephritis and activates mesangial cells. Secretion of Ptx3 in adipose cells can be induced by TNF. Ptx3 is also involved in amplification of inflammatory reactions and regulation of innate immunity. The human PTX3 gene maps to chromosome 3q25.

### Product:

Rabbit IgG, 1mg/ml in PBS with 0.02% sodium azide, 50% glycerol, pH7.2

### Molecular Weight:

~ 41 kDa

### Swiss-Prot:

P26022

### Purification&Purity:

The antibody was affinity-purified from rabbit antiserum by affinity-chromatography using epitope-specific immunogen and the purity is > 95% (by SDS-PAGE).

### Applications:

WB: 1:500~1:1000

IHC: 1:50~1:200

IF: 1:50~1:200

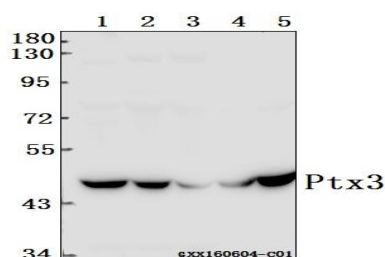
### Storage&Stability:

Store at 4 °C short term. Aliquot and store at -20 °C long term. Avoid freeze-thaw cycles.

### Specificity:

Ptx3 (Y27) polyclonal antibody detects endogenous levels of Ptx3 protein.

### DATA:



Western blot (WB) analysis of Ptx3 (Y27) polyclonal antibody at 1:500 dilution

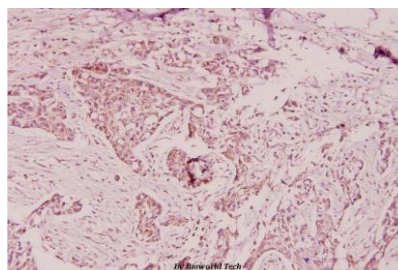
Lane1:SGC7901 whole cell lysate(40ug)

Lane2:786-O whole cell lysate(40ug)

Lane3:HEK293T whole cell lysate(40ug)

Lane4:The Brain tissue lysate of Rat(40ug)

Lane5:The Brain tissue lysate of Mouse(40ug)



Immunohistochemistry (IHC) analyzes of Ptx3 (Y27) pAb in paraffin-embedded human breast carcinoma tissue at 1:100.

### Note:

For research use only, not for use in diagnostic procedure.

### Bioworld Technology, Inc.

Add: 1660 South Highway 100, Suite 500 St. Louis Park, MN 55416, USA.

Email: [info@bioworld.com](mailto:info@bioworld.com)

Tel: 6123263284

Fax: 6122933841

### Bioworld technology, co. Ltd.

Add: No 9, weidi road Qixia District Nanjing, 210046, P. R. China.

Email: [info@biogot.com](mailto:info@biogot.com)

Tel: 0086-025-68037686

Fax: 0086-025-68035151