

## AKAP5 (E7) polyclonal antibody

Catalog: BS1962

Host: Rabbit

Reactivity: Human, Mouse, Rat

### BackGround:

AKAPs (A-kinase anchoring proteins), as their name implies, are a family of scaffolding proteins that bind regulatory subunits of Protein Kinase A (PKA) thus localizing PKA activity to distinct regions of the cell. Beyond a common amphipathic alpha helix that is responsible for recruiting the PKA regulatory subunit (RI $\alpha$ , RII $\alpha$ , RI $\beta$ , or RII $\beta$ ), individual AKAPs contain additional domains responsible for the recruitment of additional signaling proteins (phosphodiesterases, phosphatases, cytoskeletal components, other kinase, etc.) or restricting AKAP to a specific subcellular location. AKAP5 (also known as P75, AKAP75, or AKAP79) is predominantly expressed in neuronal tissues and cells where it serves to localize type II PKA to post-synaptic densities. AKAP5 specifically binds to the regulatory subunit of PKAII $\beta$ , anchoring the enzyme to the plasma membrane and sites of cytoskeletal/membrane junctions. The other binding domains of AKAP5 have been shown to interact with calmodulin, PP2B, and calcineurin suggesting that AKAP5 may act to coordinate the cAMP- and Ca<sup>2+</sup>-sensing pathways in various cell types.

### Product:

Rabbit IgG, 1mg/ml in PBS with 0.02% sodium azide, 50% glycerol, pH7.2

### Molecular Weight:

~ 47, 79 kDa

### Swiss-Prot:

P24588

### Purification&Purity:

The antibody was affinity-purified from rabbit antiserum by affinity-chromatography using epitope-specific immunogen and the purity is > 95% (by SDS-PAGE).

### Applications:

WB: 1:500~1:1000

IHC: 1:50~1:200

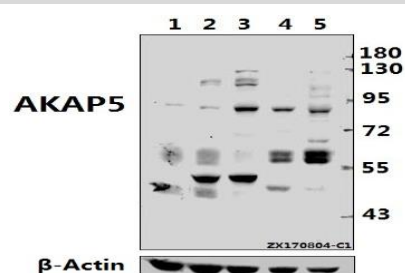
### Storage&Stability:

Store at 4 °C short term. Aliquot and store at -20 °C long term. Avoid freeze-thaw cycles.

### Specificity:

AKAP5 (E7) polyclonal antibody detects endogenous levels of AKAP5 protein.

### DATA:



Western blot (WB) analysis of AKAP5 (E7) pAb at 1:500 dilution

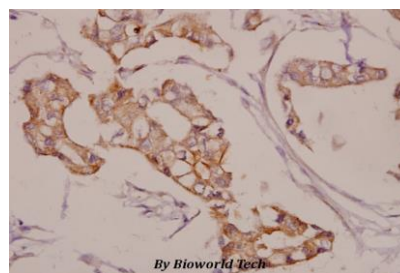
Lane1:MEF whole cell lysate(40ug)

Lane2:C6 whole cell lysate(40ug)

Lane3:HeLa whole cell lysate(40ug)

Lane4:A549 whole cell lysate(40ug)

Lane5:HEK293T whole cell lysate(40ug)



Immunohistochemistry (IHC) analyzes of AKAP5 (E7) pAb in paraffin-embedded human breast carcinoma tissue at 1:50.

### Note:

For research use only, not for use in diagnostic procedure.

### Bioworld Technology, Inc.

Add: 1660 South Highway 100, Suite 500 St. Louis Park, MN 55416, USA.

Email: [info@bioworld.com](mailto:info@bioworld.com)

Tel: 6123263284

Fax: 6122933841

### Bioworld technology, co. Ltd.

Add: No 9, weidi road Qixia District Nanjing, 210046, P. R. China.

Email: [info@biogot.com](mailto:info@biogot.com)

Tel: 0086-025-68037686

Fax: 0086-025-68035151



## PRODUCT DATA SHEET

Bioworld Technology, Inc.

---

---

### **Bioworld Technology, Inc.**

**Add:** 1660 South Highway 100, Suite 500 St. Louis Park,  
MN 55416, USA.

**Email:** [info@bioworld.com](mailto:info@bioworld.com)

**Tel:** 6123263284

**Fax:** 6122933841

### **Bioworld technology, co. Ltd.**

**Add:** No 9, weidi road Qixia District Nanjing, 210046,  
P. R. China.

**Email:** [info@biogot.com](mailto:info@biogot.com)

**Tel:** 0086-025-68037686

**Fax:** 0086-025-68035151