

Hox-C6 (G220) polyclonal antibody

Catalog: BS1919

Host: Rabbit

Reactivity: Human, Mouse, Rat

Background:

The Hox proteins play a role in development and cellular differentiation by regulating downstream target genes. Specifically, the Hox proteins direct DNA-protein and protein-protein interactions that assist in determining the morphologic features associated with the anterior-posterior body axis. The mammalian Hox gene complex consists of 39 genes that are located on four linkage groups, which are dispersed over four chromosomes. Hox genes that occupy the same relative position along the 5' to 3' coordinate (trans-paralogous genes) are more similar in sequence and expression pattern than adjacent Hox genes on the same chromosome. HoxC6 sequence-specific transcription factor is part of a developmental regulatory system that provides cells with specific positional identities on the anterior-posterior axis. HoxC6 may be a novel potential therapeutic target for prostate cancer.

Product:

1 mg/ml in Phosphate buffered saline (PBS) with 0.05% sodium azide, approx. pH 7.2.

Molecular Weight:

~ 26 kDa

Swiss-Prot:

P09630

Purification&Purity:

The antibody was affinity-purified from rabbit antiserum by affinity-chromatography using epitope-specific immunogen and the purity is > 95% (by SDS-PAGE).

Applications:

WB: 1:500~1:1000

IHC: 1:50~1:200

IF: 1:50~1:200

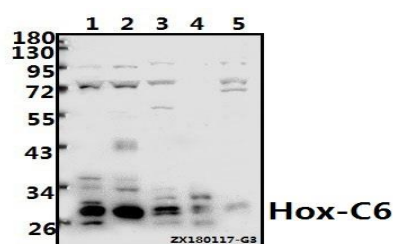
Storage&Stability:

Store at 4 °C short term. Aliquot and store at -20 °C long term. Avoid freeze-thaw cycles.

Specificity:

Hox-C6 (G220) polyclonal antibody detects endogenous levels of Hox-C6 protein.

DATA:



Western blot (WB) analysis of Hox-C6 (G220) pAb at 1:500 dilution

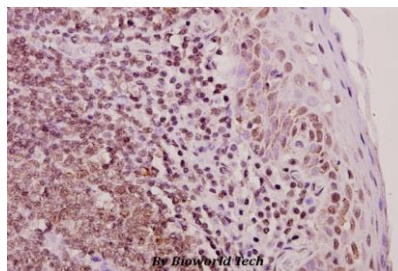
Lane1:MCF-7 whole cell lysate(40ug)

Lane2:PC3 whole cell lysate(40ug)

Lane3:3T3-L1 whole cell lysate(40ug)

Lane4:C6 whole cell lysate(40ug)

Lane5:A2780 whole cell lysate(40ug)



Immunohistochemistry (IHC) analyzes of Hox-C6 (G220) pAb in paraffin-embedded human tonsil carcinoma tissue at 1:50.

Note:

For research use only, not for use in diagnostic procedure.

Bioworld Technology, Inc.

Add: 1660 South Highway 100, Suite 500 St. Louis Park, MN 55416, USA.

Email: info@bioworld.com

Tel: 6123263284

Fax: 6122933841

Bioworld technology, co. Ltd.

Add: No 9, weidi road Qixia District Nanjing, 210046, P. R. China.

Email: info@biogot.com

Tel: 0086-025-68037686

Fax: 0086-025-68035151