

## Di-Ras1 (R181) polyclonal antibody

Catalog: BS1897

Host: Rabbit

Reactivity: Human, Mouse, Rat

### BackGround:

Members of the Ras superfamily of small GTP-binding proteins are critical mediators of diverse cell signaling pathways, including those leading to cell proliferation, cytoskeletal organization and secretion. The counter-conversion of the active GTP-bound form of these proteins to their inactive GDP-bound form is influenced by two types of regulatory proteins: those that alter the intrinsic GTPase activity of the GTP-binding proteins and those that alter the rate of GDP/GTP exchange. DIRAS1 (DIRAS family, GTP-binding Ras-like 1), also known as distinct subgroup of the Ras family member 1, RIG (Ras-related inhibitor of cell growth), small GTP-binding tumor suppressor 1 or GBTS1, is a 198 amino acid cell membrane protein expressed at high levels in brain and heart. DIRAS1 displays low GTPase activity and is encoded by a gene that maps to human chromosome 19p13.3.

### Product:

1 mg/ml in Phosphate buffered saline (PBS) with 0.05% sodium azide, approx. pH 7.2.

### Molecular Weight:

~ 22 kDa

### Swiss-Prot:

O95057

### Purification&Purity:

The antibody was affinity-purified from rabbit antiserum by affinity-chromatography using epitope-specific immunogen and the purity is > 95% (by SDS-PAGE).

### Applications:

WB: 1:500~1:1000

IHC: 1:50~1:200

### Storage&Stability:

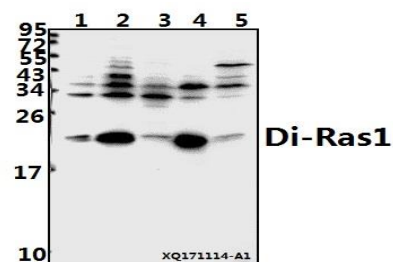
Store at 4 °C short term. Aliquot and store at -20 °C long

term. Avoid freeze-thaw cycles.

### Specificity:

Di-Ras1 (R181) polyclonal antibody detects endogenous levels of Di-Ras1 protein.

### DATA:



Western blot (WB) analysis of Di-Ras1 (R181) pAb at 1:500 dilution

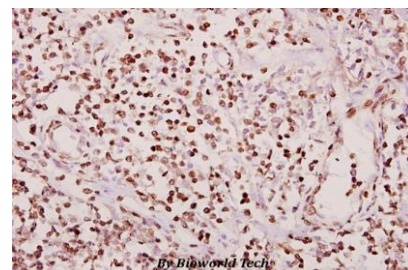
Lane1:HEK293T whole cell lysate(20ug)

Lane2:MCF-7 whole cell lysate(40ug)

Lane3:PC3 whole cell lysate(40ug)

Lane4:C6 whole cell lysate(40ug)

Lane5:3T3-L1 whole cell lysate(40ug)



Immunohistochemistry (IHC) analyzes of Di-Ras1 (R181) pAb in paraffin-embedded human tonsil carcinoma tissue at 1:50.

### Note:

For research use only, not for use in diagnostic procedure.

### Bioworld Technology, Inc.

Add: 1660 South Highway 100, Suite 500 St. Louis Park, MN 55416, USA.

Email: [info@bioworld.com](mailto:info@bioworld.com)

Tel: 6123263284

Fax: 6122933841

### Bioworld technology, co. Ltd.

Add: No 9, weidi road Qixia District Nanjing, 210046, P. R. China.

Email: [info@biogot.com](mailto:info@biogot.com)

Tel: 0086-025-68037686

Fax: 0086-025-68035151