

**BACH1 (L160) polyclonal antibody**

Catalog: BS1868

Host: Rabbit

Reactivity: Human, Mouse, Rat

**BackGround:**

BACH1 and BACH2, heterodimerization partners of MafK, are members of a novel family of BTB/POZ-basic region leucine zipper (bzip) factors. BACH1 and BACH2 have significant similarity to each other in BTB domain and Cap'n' collar-type bZip domain but are otherwise divergent. BACH1 appears ubiquitous, whereas BACH2 is restricted to monocytes, neuronal cells and is abundantly expressed in the early stages of B-cell differentiation. BACH2, a 841 amino acid polypeptide, is an Nrf2-related transcription repressor and a tissue-specific partner of the Maf oncoprotein family.

**Product:**

Rabbit IgG, 1mg/ml in PBS with 0.02% sodium azide, 50% glycerol, pH7.2

**Molecular Weight:**

~ 90 kDa

**Swiss-Prot:**

O14867

**Purification&Purity:**

The antibody was affinity-purified from rabbit antiserum by affinity-chromatography using epitope-specific immunogen and the purity is > 95% (by SDS-PAGE).

**Applications:**

WB: 1:500~1000

IHC: 1:50~1:200

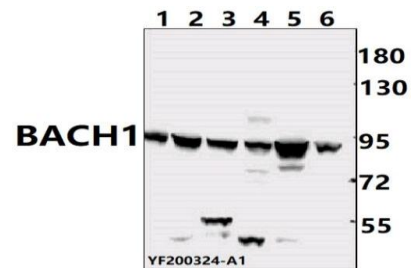
IF: 1:50~1:200

**Storage&Stability:**

Store at 4 °C short term. Aliquot and store at -20 °C long term. Avoid freeze-thaw cycles.

**Specificity:**

BACH1 (L160) polyclonal antibody detects endogenous levels of BACH1 protein.

**DATA:**

Western blot (WB) analysis of IKBKG pAb at 1:500 dilution

Lane1: The lung tissue lysate of Mouse(40ug)

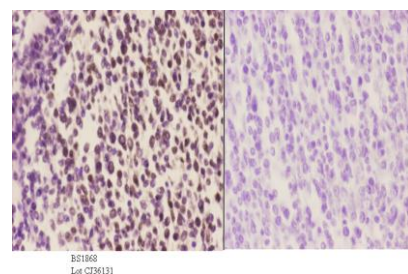
Lane2: Aml-12 whole cell lysate(40ug)

Lane3: PMVEC whole cell lysate(40ug)

Lane4: HEK293T whole cell lysate(40ug)

Lane5: HeLa whole cell lysate (40ug)

Lane6: SHSY5Y whole cell lysate (40ug)



Immunohistochemistry (IHC) analyzes of BACH1 (L160) pAb in paraffin-embedded human tonsil carcinoma tissue at 1:50, showing Nucleus staining. Negative control (the right) Using PBS instead of primary antibody, secondary antibody is Goat Anti-Rabbit IgG-biotin followed by avidin-peroxidase.

**Note:**

For research use only, not for use in diagnostic procedure.

**Bioworld Technology, Inc.**

Add: 1660 South Highway 100, Suite 500 St. Louis Park, MN 55416, USA.

Email: [info@bioworld.com](mailto:info@bioworld.com)

Tel: 6123263284

Fax: 6122933841

**Bioworld technology, co. Ltd.**

Add: No 9, weidi road Qixia District Nanjing, 210046, P. R. China.

Email: [info@biogot.com](mailto:info@biogot.com)

Tel: 0086-025-68037686

Fax: 0086-025-68035151