

## 14-3-3 $\theta$ (W228) polyclonal antibody

Catalog: BS1790

Host: Rabbit

Reactivity: Human, Mouse, Rat

### Background:

Protein interactions with 14-3-3 show distinct preferences for its different isoforms and are regulated by phosphorylation of both 14-3-3 and the bound protein. 14-3-3 tau/theta is primarily expressed in T-cells although it occurs at lower levels in the brain, heart, pancreas placenta and kidneys. It plays a role in cell cycle progression via interaction with p27(Kip1). Along with COPI, the theta isoform binds the GB1 RSR sequence involved in protein trafficking. The isoform forms a complex with Hsp60 and cellular prion protein which may be involved in prion diseases. Elevated levels of 14-3-3 tau/theta are observed in amyotrophic lateral sclerosis. 14-3-3 tau/theta also binds BCR/Abl, bacterial effector protein Tir, yes-associated protein and the FSH receptor.

### Product:

Rabbit IgG, 1mg/ml in PBS with 0.02% sodium azide, 50% glycerol, pH7.2

### Molecular Weight:

~ 28 kDa

### Swiss-Prot:

P27348

### Purification&Purity:

The antibody was affinity-purified from rabbit antiserum by affinity-chromatography using epitope-specific immunogen and the purity is > 95% (by SDS-PAGE).

### Applications:

WB: 1:500~1:1000

IHC: 1:50~1:200

IF: 1:50~1:200

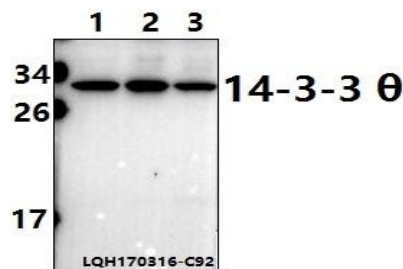
### Storage&Stability:

Store at 4 °C short term. Aliquot and store at -20 °C long term. Avoid freeze-thaw cycles.

### Specificity:

14-3-3  $\theta$  (W228) polyclonal antibody detects endogenous levels of 14-3-3 protein theta/tau.

### DATA:

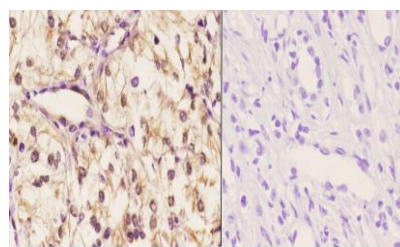


Western blot (WB) analysis of 14-3-3  $\theta$  (W228) polyclonal antibody at 1:500 dilution

Lane1:Hela whole cell lysate(40ug)

Lane2:C6 whole cell lysate(40ug)

Lane3:NIH-3T3 whole cell lysate(40ug)



Immunohistochemistry (IHC) analyzes of 14-3-3  $\theta$  (W228) pAb in paraffin-embedded human kidney carcinoma tissue at 1:50. showing cytoplasmic and nucleus staining. Negative control (the right) Using PBS instead of primary antibody, secondary antibody is Goat Anti-Rabbit IgG-biotin followed by avidin-peroxidase.

### Note:

For research use only, not for use in diagnostic procedure.

### Bioworld Technology, Inc.

Add: 1660 South Highway 100, Suite 500 St. Louis Park, MN 55416, USA.

Email: [info@bioworld.com](mailto:info@bioworld.com)

Tel: 6123263284

Fax: 6122933841

### Bioworld technology, co. Ltd.

Add: No 9, weidi road Qixia District Nanjing, 210046, P. R. China.

Email: [info@biogot.com](mailto:info@biogot.com)

Tel: 0086-025-68037686

Fax: 0086-025-68035151