

PLC β 3 (L532) polyclonal antibody

Catalog: BS1787

Host: Rabbit

Reactivity: Human, Mouse, Rat

BackGround:

A total of eight mammalian PLC isozymes have been described (PLC β 1, PLC β 2, PLC β 3, PLC β 4, PLC γ 1, PLC γ 2, PLC δ 1 and PLC δ 2) with molecular weights ranging from 85 to 150 kDa. The γ -type enzymes are unique in that they contain SH2 and SH3 domains. Moreover, the two γ -type enzymes, but not the β and δ isozymes, are subject to activation by a number of protein tyrosine kinases which associate with their SH2 domains and induce their activation by phosphorylation. In contrast, activation of PLC β 1, PLC β 2 and PLC β 3 is mediated by the α subunits of the Gq class of heterotrimeric G proteins and by certain $\beta\gamma$ G protein subunits. The regulatory mechanisms for PLC δ 1 and PLC δ 2 are as yet not resolved.

Product:

Rabbit IgG, 1mg/ml in PBS with 0.02% sodium azide, 50% glycerol, pH7.2

Molecular Weight:

~ 150 kDa

Swiss-Prot:

Q01970

Purification&Purity:

The antibody was affinity-purified from rabbit antiserum by affinity-chromatography using epitope-specific immunogen and the purity is > 95% (by SDS-PAGE).

Applications:

WB: 1:500~1:1000

IHC: 1:50~1:200

IF: 1:200

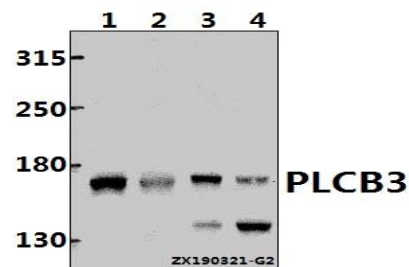
Storage&Stability:

Store at 4 °C short term. Aliquot and store at -20 °C long term. Avoid freeze-thaw cycles.

Specificity:

PLC β 3 (L532) polyclonal antibody detects endogenous levels of PLC β 3 protein.

DATA:



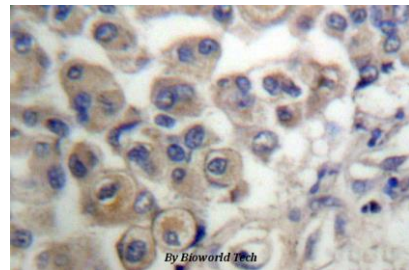
Western blot (WB) analysis of PLCB3 pAb at 1:500 dilution

Lane1:HCT116 whole cell lysate(40ug)

Lane2:Beas-2B whole cell lysate(40ug)

Lane3:PMVEC whole cell lysate(40ug)

Lane4:CT26 whole cell lysate(40ug)



Immunohistochemistry (IHC) analyzes of PLC β 3 (L532) pAb in paraffin-embedded human breast carcinoma tissue.

Note:

For research use only, not for use in diagnostic procedure.

Bioworld Technology, Inc.

Add: 1660 South Highway 100, Suite 500 St. Louis Park, MN 55416, USA.

Email: info@bioworld.com

Tel: 6123263284

Fax: 6122933841

Bioworld technology, co. Ltd.

Add: No 9, weidi road Qixia District Nanjing, 210046, P. R. China.

Email: info@biogot.com

Tel: 0086-025-68037686

Fax: 0086-025-68035151