

Crystallin- α B (S41) polyclonal antibody

Catalog: BS1738

Host: Rabbit

Reactivity: Human, Mouse, Rat

BackGround:

α -crystallins consist of three gene products, α A, α B and α C-crystallin, which are members of the small heat shock protein family (HSP 20). They are induced by heat shock, and act as molecular chaperones by holding denatured proteins in large soluble aggregates. However, unlike other molecular chaperones, α -crystallins do not renature these proteins. Expression of α A-crystallin is restricted to the lens. Defects in this gene cause autosomal dominant congenital cataracts (ADCC). The human α B-crystallin gene product is expressed in many tissues, including lens, heart and skeletal muscle. Elevated expression of α B-crystallin is associated with many neurological diseases, and a missense mutation in this gene has co-segregated in a family with a Desmin-related myopathy.

Product:

Rabbit IgG, 1mg/ml in PBS with 0.02% sodium azide, 50% glycerol, pH7.2

Molecular Weight:

~ 26 kDa

Swiss-Prot:

P02511

Purification&Purity:

The antibody was affinity-purified from rabbit antiserum by affinity-chromatography using epitope-specific im-

munogen and the purity is > 95% (by SDS-PAGE).

Applications:

IHC: 1:50~1:200

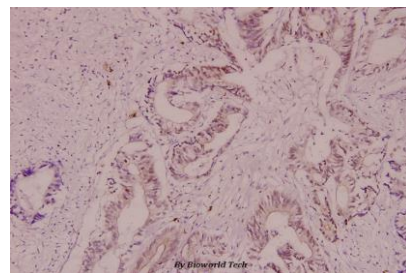
Storage&Stability:

Store at 4 °C short term. Aliquot and store at -20 °C long term. Avoid freeze-thaw cycles.

Specificity:

Crystallin- α B (S41) polyclonal antibody detects endogenous levels of Crystallin- α B protein.

DATA:



Immunohistochemistry (IHC) analyzes of Crystallin- α B (S41) pAb in paraffin-embedded human colorectal cancer carcinoma tissue at 1:100.

Note:

For research use only, not for use in diagnostic procedure.

Bioworld Technology, Inc.

Add: 1660 South Highway 100, Suite 500 St. Louis Park, MN 55416, USA.

Email: info@bioworld.com

Tel: 6123263284

Fax: 6122933841

Bioworld technology, co. Ltd.

Add: No 9, weidi road Qixia District Nanjing, 210046, P. R. China.

Email: info@biogot.com

Tel: 0086-025-68037686

Fax: 0086-025-68035151