

## ATP6 polyclonal antibody

Catalog: BS1681

Host: Rabbit

Reactivity: Mouse, Rat

### Background:

ATP6, also known as MT-ATP6, ATPASE6 or MTATP6, is a 226 amino acid multi-pass membrane protein that localizes to mitochondria and functions as a component of the F<sub>0</sub> proton channel, playing a direct role in the transport of protons across the mitochondrial membrane. Defects in the gene encoding ATP6 are the cause of infantile bilateral striatal necrosis, Leigh syndrome (LS), Leber hereditary optic neuropathy (LHON) and neurogenic muscle weakness, ataxia, and retinitis pigmentosa (NARP), all of which are neurological or retinal disorders. The gene encoding ATP6 exists as part of the mitochondrial genome.

### Product:

Rabbit IgG, 1mg/ml in PBS with 0.02% sodium azide, 50% glycerol, pH 7.2

### Molecular Weight:

~ 25 kDa

### Swiss-Prot:

P00848

### Purification & Purity:

The antibody was affinity-purified from rabbit antiserum by affinity-chromatography using epitope-specific immunogen and the purity is > 95% (by SDS-PAGE).

### Applications:

WB: 1:500~1:1000

IHC: 1:50~1:200

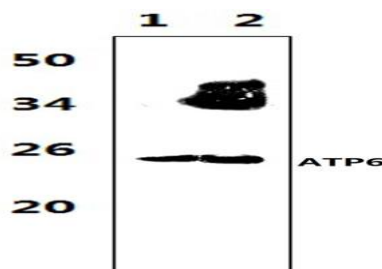
### Storage & Stability:

Store at 4 °C short term. Aliquot and store at -20 °C long term. Avoid freeze-thaw cycles.

### Specificity:

ATP6 polyclonal antibody detects endogenous levels of ATP6 protein.

### DATA:



Western blot (WB) analysis of ATP6 polyclonal antibody at 1:1000 dilution

Lane 1: The muscle tissue lysate of Rat (47 μg)

Lane 2: The muscle tissue lysate of Mouse (37 μg)

### Note:

For research use only, not for use in diagnostic procedure.

### Bioworld Technology, Inc.

Add: 1660 South Highway 100, Suite 500 St. Louis Park, MN 55416, USA.

Email: [info@bioworld.com](mailto:info@bioworld.com)

Tel: 6123263284

Fax: 6122933841

### Bioworld technology, co. Ltd.

Add: No 9, weidi road Qixia District Nanjing, 210046, P. R. China.

Email: [info@biogot.com](mailto:info@biogot.com)

Tel: 0086-025-68037686

Fax: 0086-025-68035151